



Tekform Double Wall Drawer

Important Information

Technical information

While every effort has been made in the production of this catalogue to ensure the accuracy of information, our products are continually being revised and users should confirm the up to date specification before ordering. Due to constant improvement of products presented in the catalogue, we can make changes at any time and without notice.

Responsibility

It is the responsibility of the user to ensure the fitness of hardware for the intended purpose. We recommend assessment by appropriate testing in the application and by technical enquiry to our representatives.

Intellectual property

Titus Group owns the intellectual property rights in its products worldwide whether as trademarks, patents, intellectual, copyright, designs, illustrations, drawings and the 'know how' contained in their design and production. Titus Group respects the equivalent rights in competitors and all other relevant product design rights. To our knowledge our products do not infringe any intellectual property rights of competitors or other parties. Titus Group takes infringements of its rights seriously and will rigorously defend these rights to the full extent of the law.

*Non preferred articles

All Item numbers in the catalogue marked with * are for non preferred items available on extended delivery times.

Trademarks

Titus and Titusonic are registered trademarks of Titus International Ltd. Lama is a registered trademark of Titus d.o.o. Dekani, WoodWelding is a registered trademark of WW SA.

Double Wall Drawer Systems



'EasyFix' front panel connector

- Hand insertion
- Quarter turn lock
- Repeatable assembly and disassembly possible

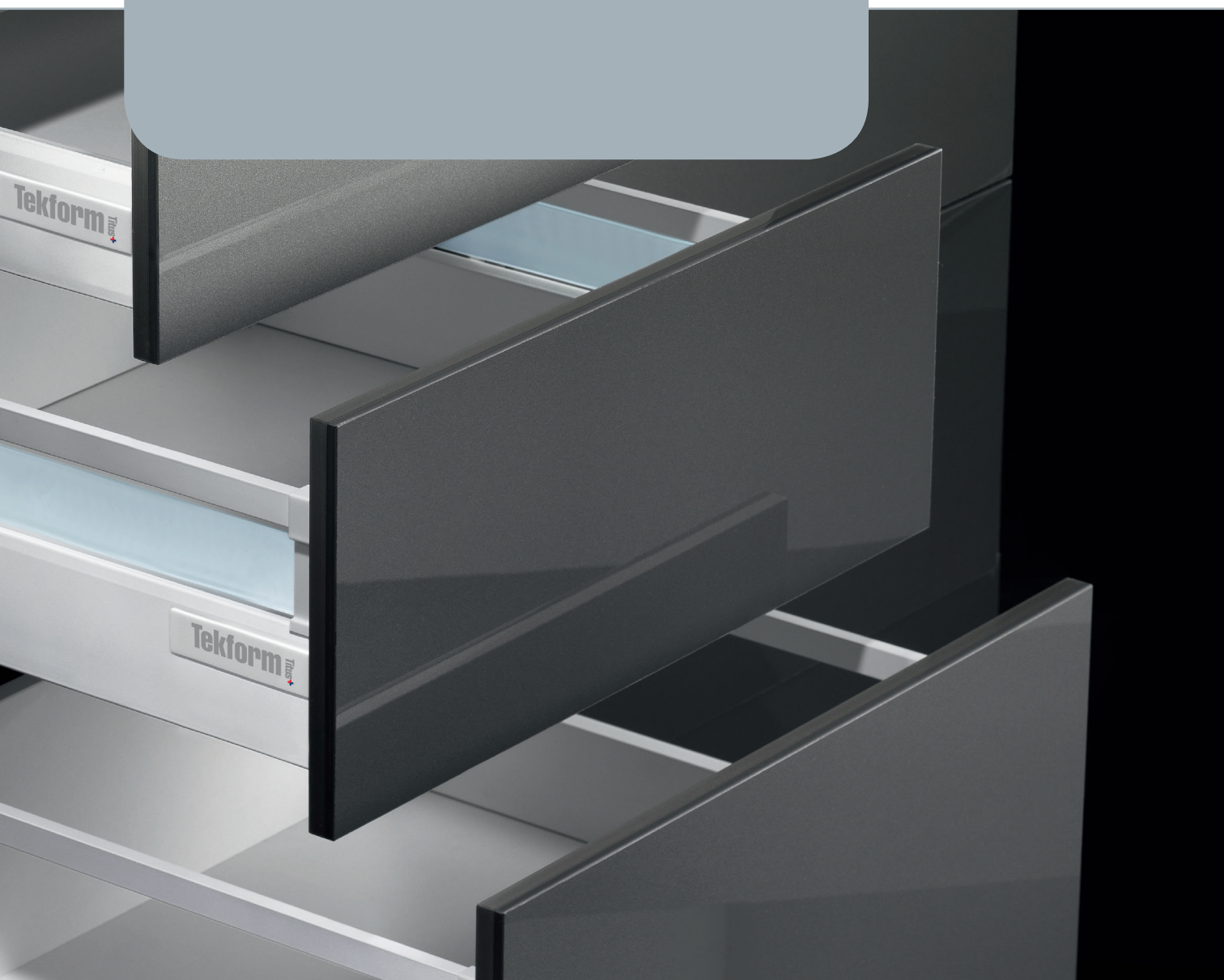
User friendly mounting

- Intuitive installation instructions
- Easy assembly and disassembly of the drawer

Superior vertical and horizontal stability of rails

- Smooth and silent operating
- Reliable drawer opening and closing
- Improved drawer stability in open position

Tekform Drawer



Precise drawer alignment

- Tekform drawer provides a +/- 1mm tolerance on drawer bottom width
- Intuitive drawer front adjustment

Integrated Titus damper

- Life-long reliable closing
- Consistent damping at various closing speeds
- 'Confident Close'

Quality certified

- By European specialized institutions

Tekform Drawer

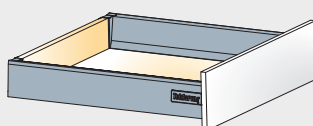
Product Guide

Page

Tekform Drawer

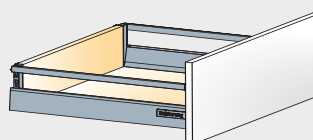
Tekform drawer DW70

14



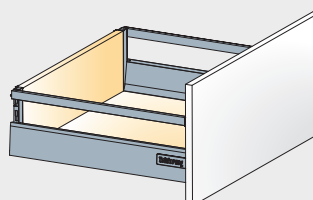
Tekform drawer DW113

16



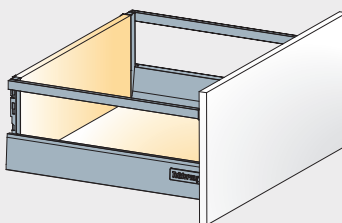
Tekform drawer DW145

18



Tekform drawer DW182

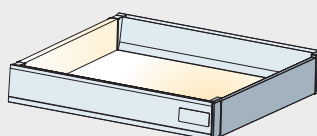
20



Inner Drawer Fronts

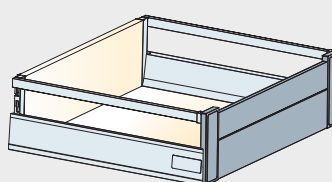
For DW70

24



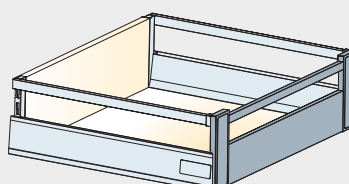
For DW145 with extension panel

26



For DW145 with square bar

28

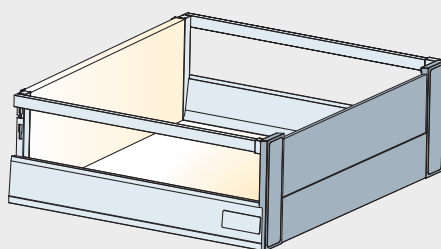


Page

Inner Drawer Fronts

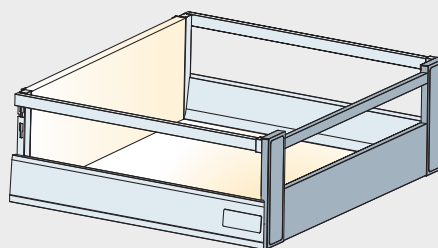
For DW182 with extension panel

30



For DW182 with square bar

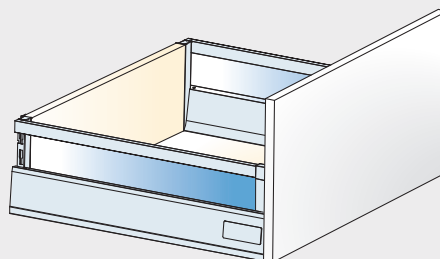
32



Accessories

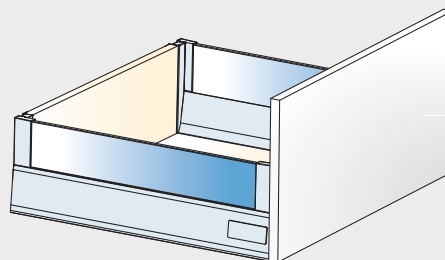
Glass sides 4mm

34



Glass sides 8mm

35



Drawer storage system

36

Tekform Drawer Information

Technical Guide

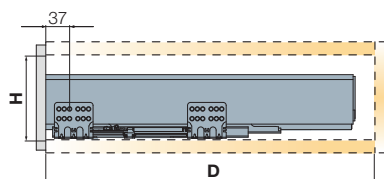
How to choose the appropriate drawer dimension?

Select Tekform drawer size based on available cabinet space. Please refer to the below chart with indicated minimum

space required in cabinet to choose appropriate drawer system.

Tekform drawer nominal length (NL) in mm

NL	270	300	350	400	450	500	550
	Tekform drawer			Tekform drawer with inner front			
	Min. height H required	Cabinet depth D	Min. height H required	Cabinet depth D			
Tekform drawer DW70	105mm	NL+min 3mm	115mm	NL+min 12mm			
Tekform drawer DW113	160mm	NL+min 3mm		NL+min 12mm			
Tekform drawer DW145	185mm	NL+min 3mm	193mm	NL+min 12mm			
Tekform drawer DW182	224mm	NL+min 3mm	224mm	NL+min 12mm			



How to fix drawer sides to the front panel?

Tekform drawer is available with 'EasyFix' or screw-in front connectors



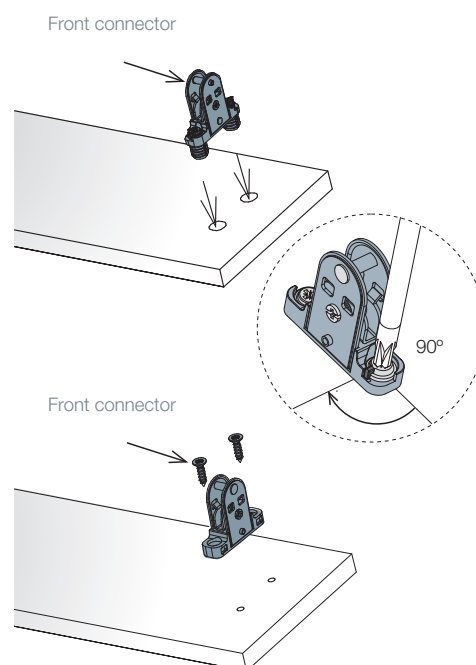
EasyFix' front connector

- hand insertion
- quarter turn locking system
- expandable plastic dowel
- easy assembly and disassembly of front panel



Screw-in front connector

- reliable connection
- fixing with Ø3.5x15mm screw (screws are not included)



Bottom panel and back panel cutting dimensions

Dimensions of bottom and back panel depends on:

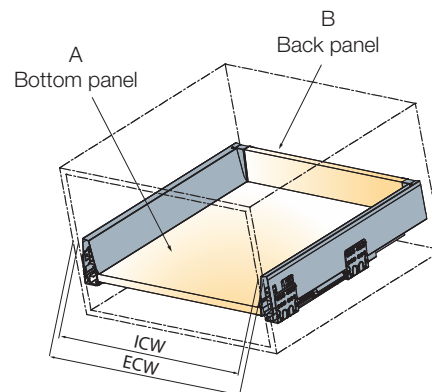
- cabinet width
- nominal drawer length
- drawer height

Tekform drawer nominal length (NL) in mm

NL	270	300	350	400	450	500	550
----	-----	-----	-----	-----	-----	-----	-----

Cabinet width

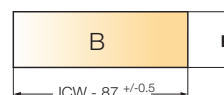
ECW: External cabinet width
ICW: Internal cabinet width
NL: Nominal length of drawer



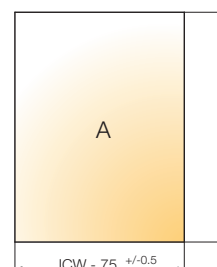
Back panel cutting dimension

Back panel height depends on the selected drawer height

	H back panel
DW70	68
DW113	119
DW145	151
DW182	183



Bottom panel cutting dimensions



NL	270	300	350	400	450	500	550
L	260	290	340	390	440	490	540

NL= Tekform drawer nominal length (in mm)

Tekform Drawer Information

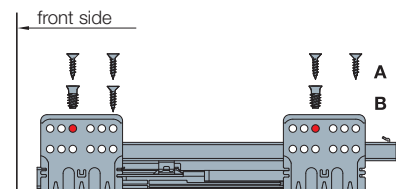
Technical Guide

How to choose the appropriate drawer runner fixing positions?

Drawer fixing positions depend on the chosen drawer front type.

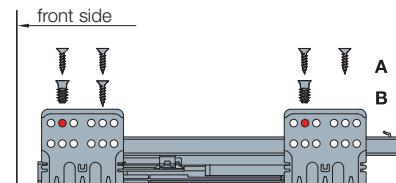
Tekform drawer with standard front

When a standard drawer front is applied, use the third hole on the drawer runner for fixing.



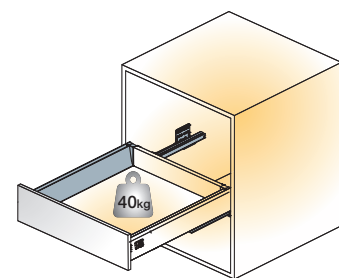
Tekform drawer with inner front

When an inner drawer front is applied, use the second hole on the drawer runner for fixing.



Load capacity

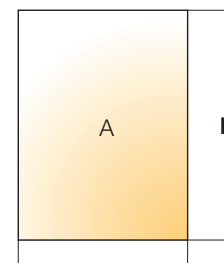
Tekform drawer load capacity is 40 kg.



Expanded tolerances

Tekform drawer provides expanded tolerances in cabinet construction and enables:

- Precise drawer alignment
- Smooth and silent operating
- Improved drawer stability in open position
- Tolerance of +/-1mm on bottom panel width size



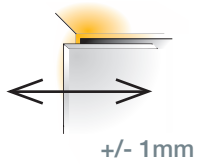
Internal cabinet width tolerance +/- 1mm



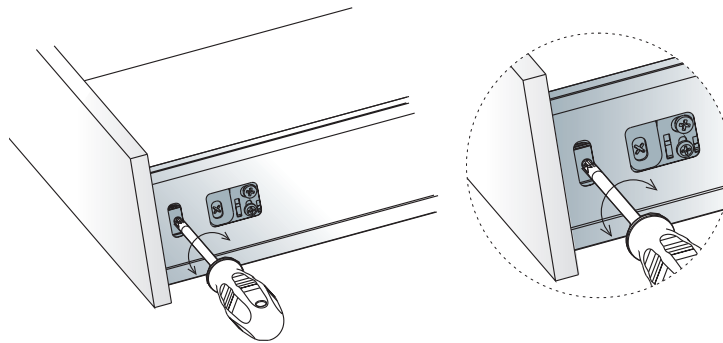
Adjustment needs to be done on both sides of the drawer

Adjustments

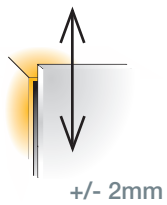
Side adjustment



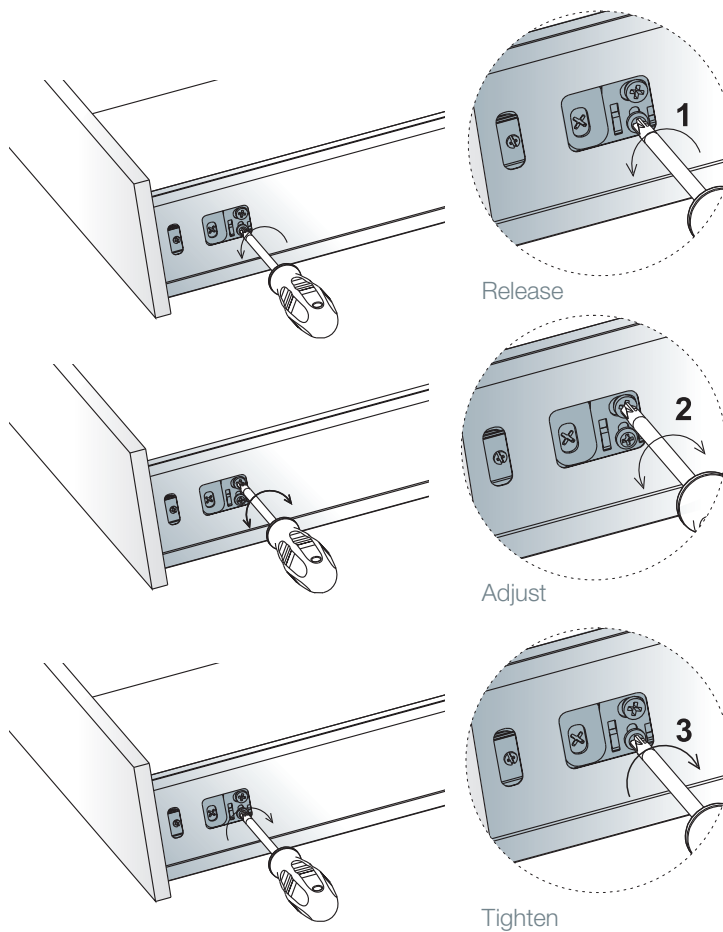
Side adjustment is done via the adjustment screw on the drawer side.



Height adjustment



Height adjustment is done via the cam. Release the locking screw and tighten it back after the front is adjusted.



Tekform Drawer Information



Adjustment needs to be done on both sides of the drawer

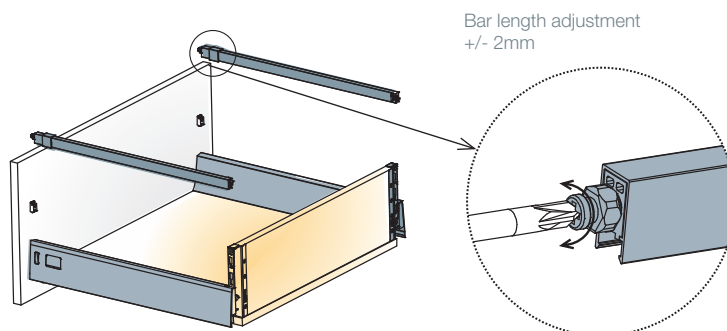
Adjustments

Depth adjustment



Depth adjustment is done through the connecting bar.

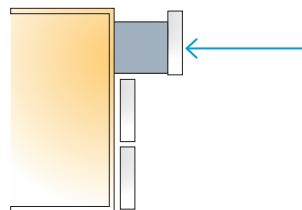
Please note: connecting bars can't be used with the 8mm thick glass sides.



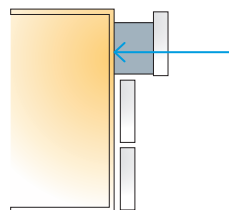
Key Design Choices

'ConfidentClose'

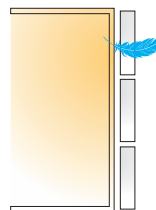
Fast closing



Late start of deceleration action



Quiet landing



Titus hydraulic damper

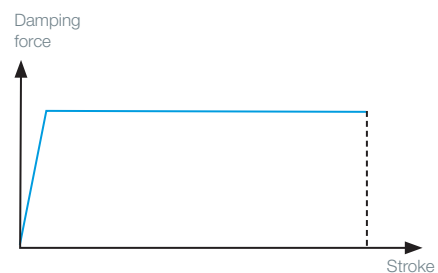
Titus hydraulic damper, designed and produced in-house

- Reliable and consistent life-long damping
- Smooth closing
- Damper's consistency over high volume production runs assured
- 100% automated quality check



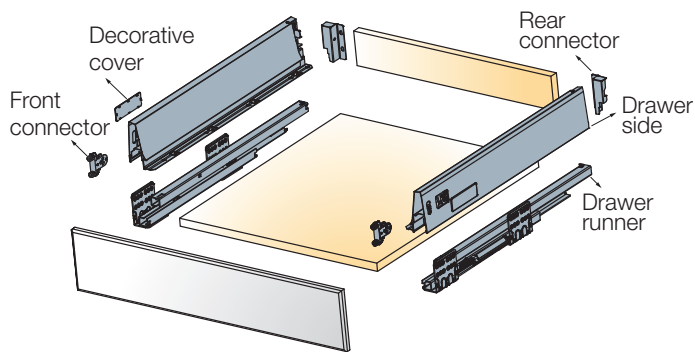
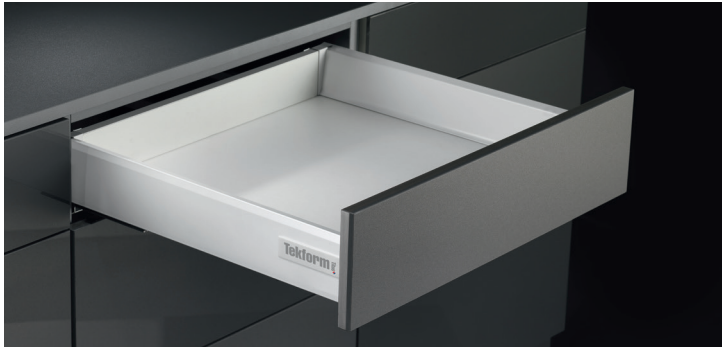
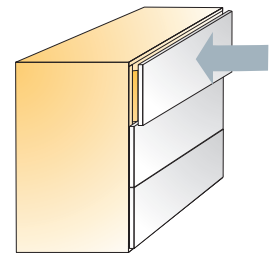
Damping action

Even and smooth soft closing action
 · Soft and reliable closing

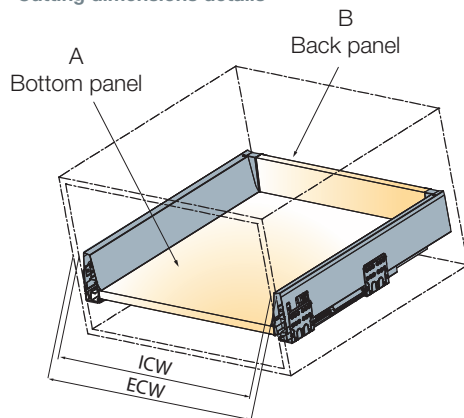


Flat damping curve shows the uniform action produced during damper closing at a defined speed.

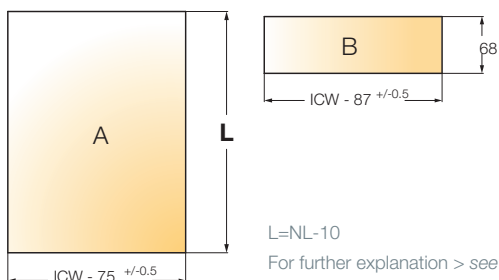
Tekform Drawer DW70



Cutting dimensions details



ECW: External cabinet width
 ICW: Internal cabinet width
 NL: Nominal length of drawer



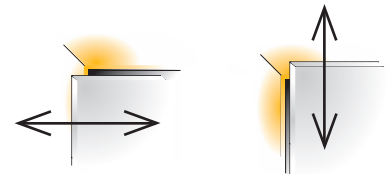
Nominal length	with EasyFix front connector		
	Item number for a set	White	Anthracite Grey
270	650.8027 >	150	180*
300	650.8030 >	150	180*
350	650.8035 >	150	180*
400	650.8040 >	150	180*
450	650.8045 >	150	180*
500	650.8050 >	150	180*
550	650.8055 >	150	180*

Assembly instructions > see page 26

**Supplied with EasyFix connectors. Order Screw-in connectors separately > 650.8905.380
 Screws not included

- Drawer runner type
- Load capacity
- Minimal height space required
- Wooden back panel thickness
- Wooden bottom panel thickness

Full extension
40 kg
105mm
16mm
16mm



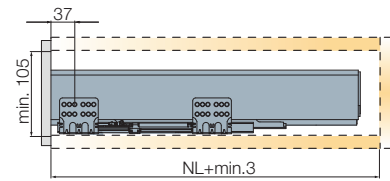
Side adjustment
+1/-1mm

Height adjustment
+2/-2mm

For further explanation > see page 11-12

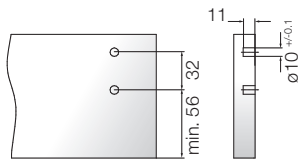
Installation dimensions

Minimum space required for the cabinet

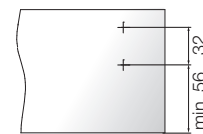


Drilling dimensions for the front panel

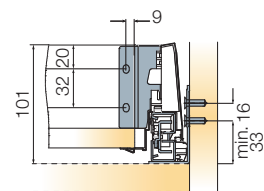
EasyFix attachment



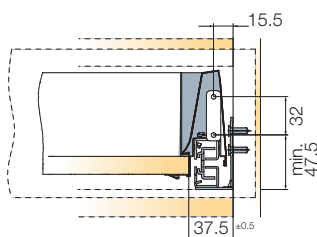
Screw-in attachment



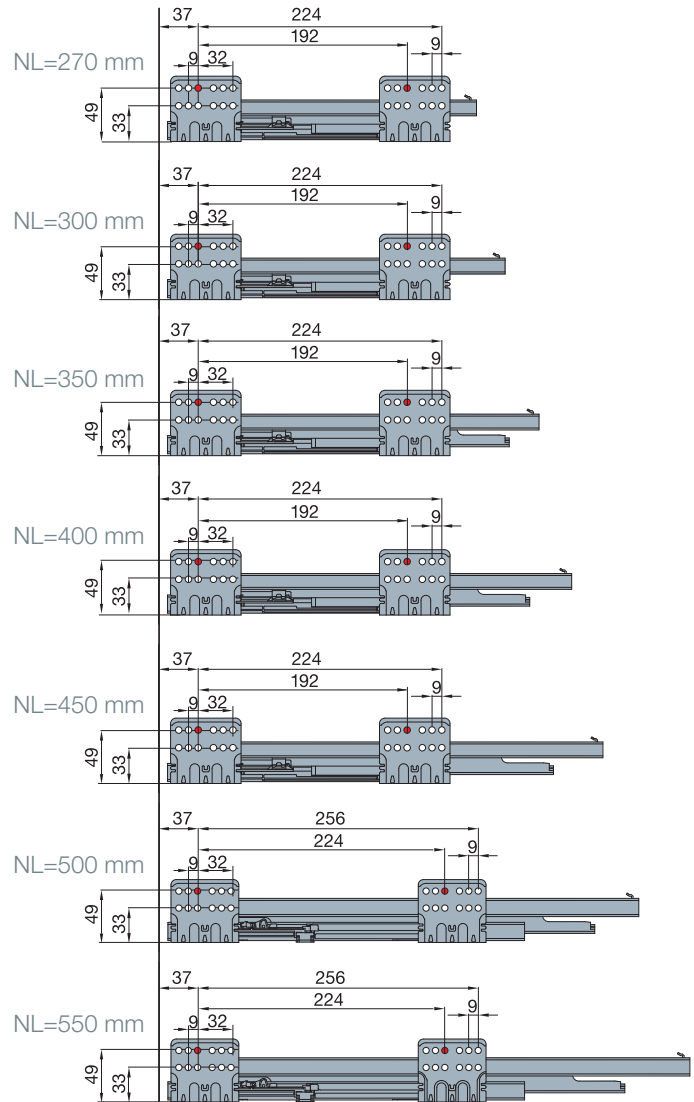
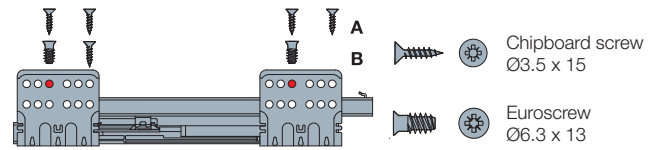
Mounting dimensions for the back panel



Installation dimensions for the front panel



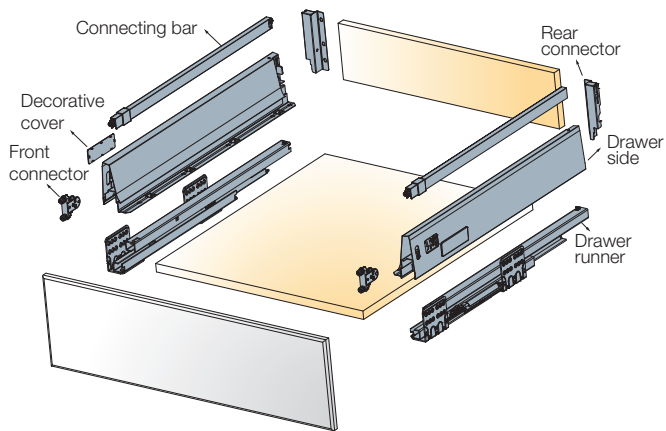
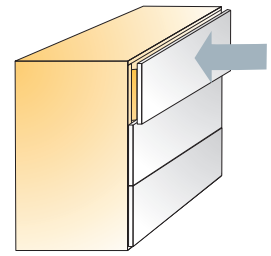
Drawer runner fixing positions



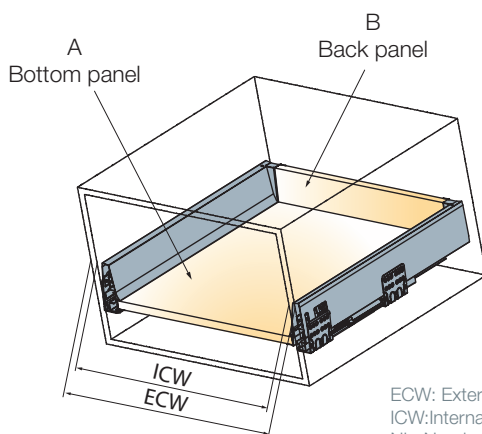
A trial mounting is always recommended. For further information please contact Titus Tekform.

Download supporting documentation from the Titus Tekform website titustekform.com.au

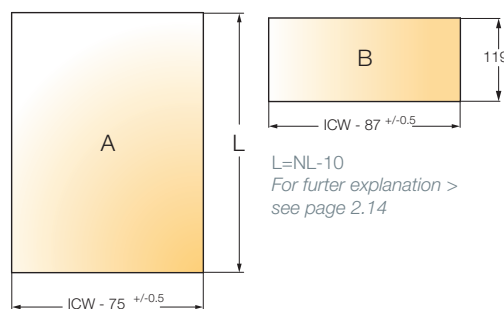
Tekform Drawer DW113

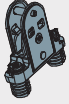


Cutting dimensions details



ECW: External cabinet width
 ICW: Internal cabinet width
 NL: Nominal length of drawer



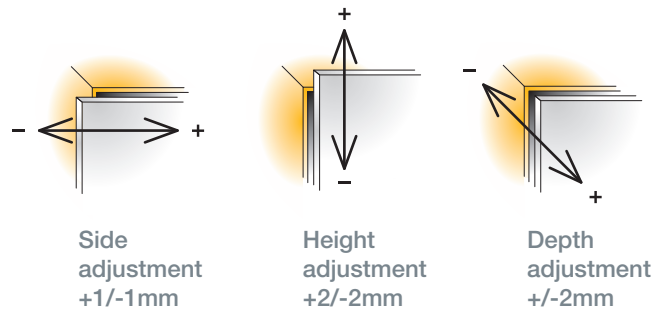
NL	with EasyFix front connector	White
Nominal length		
	Item number for a set	
270	650.8W27 >	150
300	650.8W30 >	150
350	650.8W35 >	150
400	650.8W40 >	150
450	650.8W45 >	150
500	650.8W50 >	150
550	650.8W55 >	150

* Available upon special request
 Assembly instructions > see page 2.32

**Supplied with EasyFix connectors. Order Screw-in connectors separately > 650.8905.380
 Screws not included

- Drawer runner type
- Load capacity
- Minimal height per drawer required
- Wooden back panel thickness
- Wooden bottom panel thickness

Full extension
40 kg
160mm
16mm
16mm



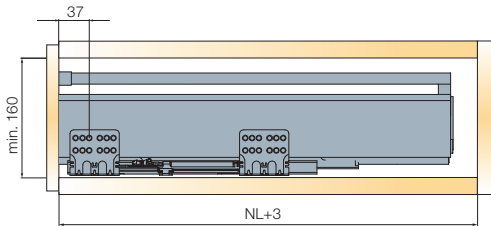
Screws are not included

For further explanation > see page 2.36

Installation dimensions

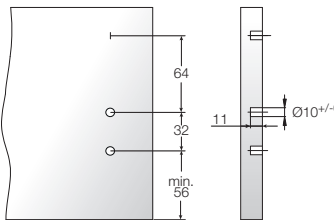
Drawer runner fixing positions

Minimum space required for the cabinet

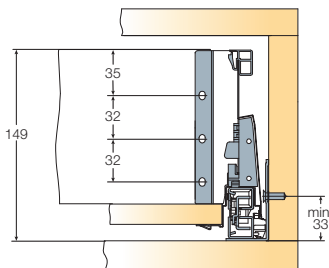


Drilling dimensions for the front panel

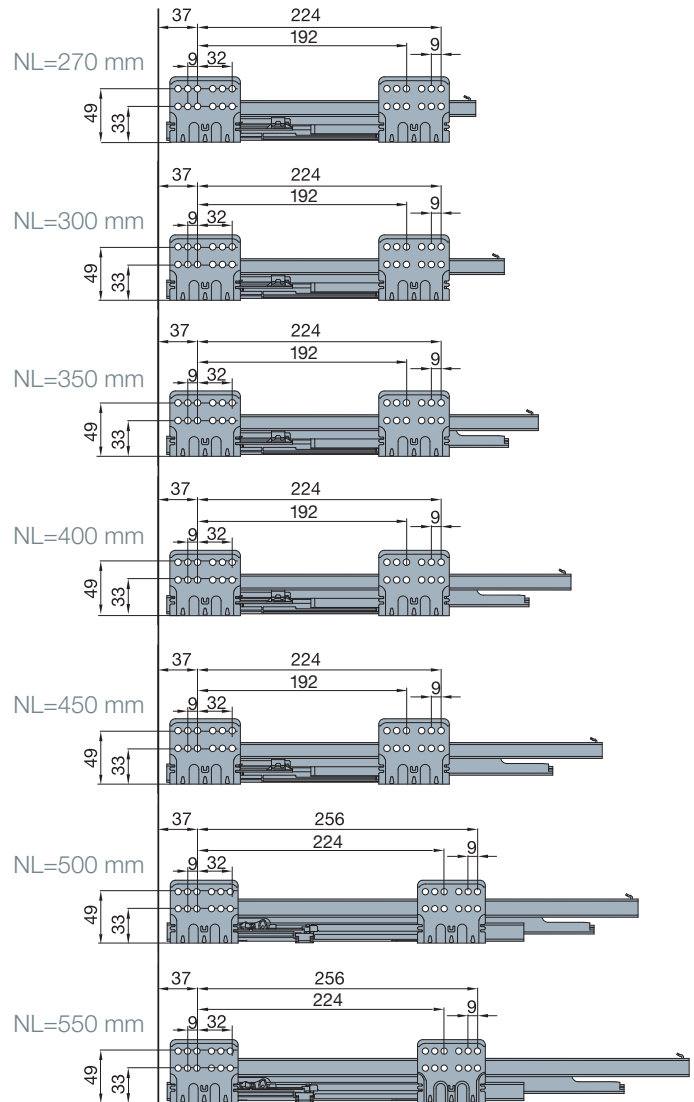
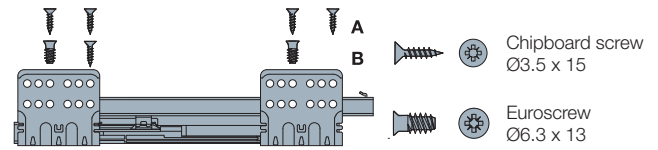
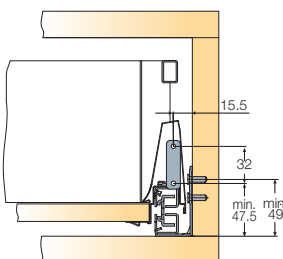
EasyFix attachment



Mounting dimensions for the back panel

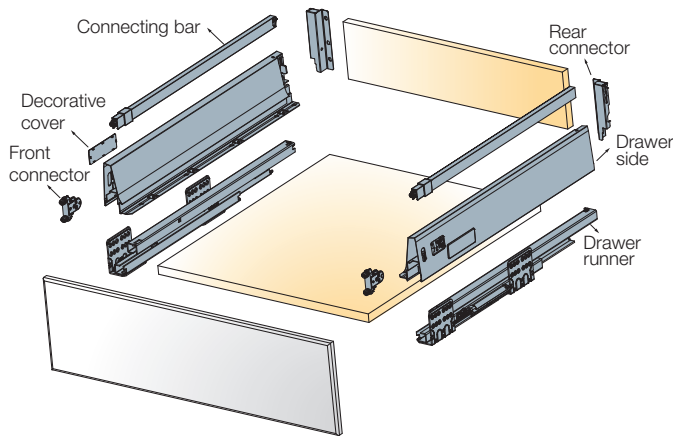
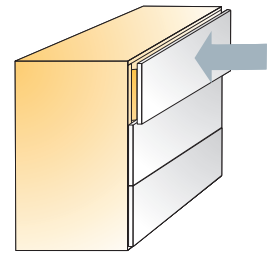


Installation dimensions for the front panel

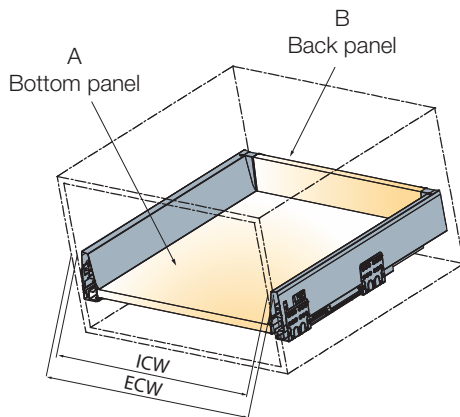


A trial mounting is always recommended. For further information please contact Titus Tekform.
Download supporting documentation from the Titus Tekform website titustekform.com.au

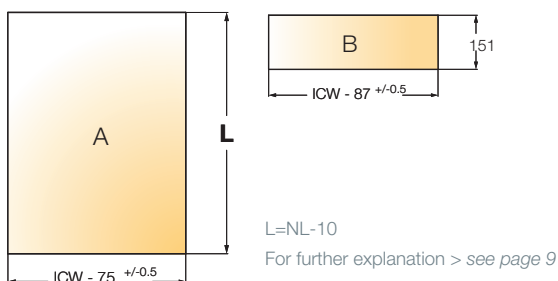
Tekform Drawer DW145



Cutting dimensions details



ECW: External cabinet width
 ICW: Internal cabinet width
 NL: Nominal length of drawer

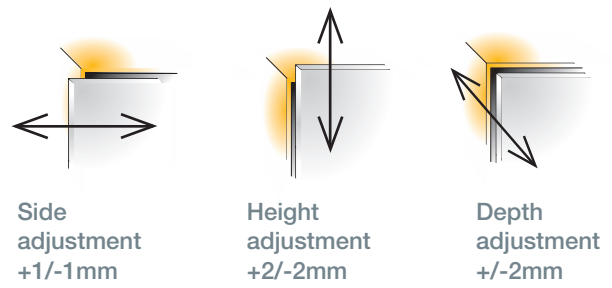


Nominal length	with EasyFix front connector		White	Anthracite Grey
	Item number for a set			
270	650.8127 >		150K	180
300	650.8130 >		150K	180
350	650.8135 >		150K	180
400	650.8140 >		150K	180
450	650.8145 >		150K	180
500	650.8150 >		150K	180
550	650.8155 >		150K	180
Assembly instructions > see page 36				
One set consists of				
Drawer sides			2 pcs	
Drawer runner			2 pcs	
Connecting bars			2 pcs	
*Front connectors			2 pcs	
Rear connectors			2 pcs	
Decorative covers			2 pcs	
Mounting instructions			1 pce	

**Supplied with EasyFix connectors. Order Screw-in connectors separately > 650.8905.380
 Screws not included

- Drawer runner type
- Load capacity
- Minimal height per drawer required
- Wooden back panel thickness
- Wooden bottom panel thickness

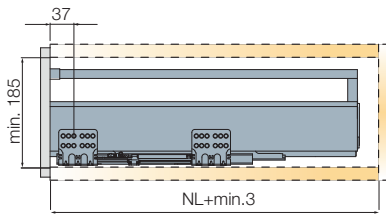
full extension
40 kg
185mm
16mm
16mm



For further explanation > see page 11-12

Installation dimensions

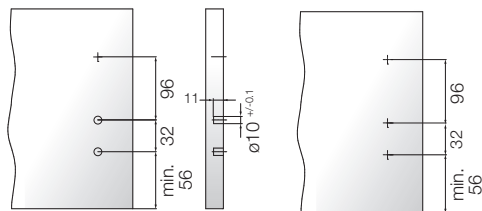
Minimum space required for the cabinet



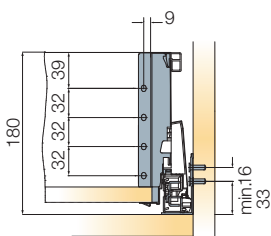
Drilling dimensions for the front panel

EasyFix attachment

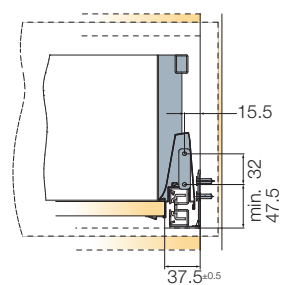
Screw-in attachment



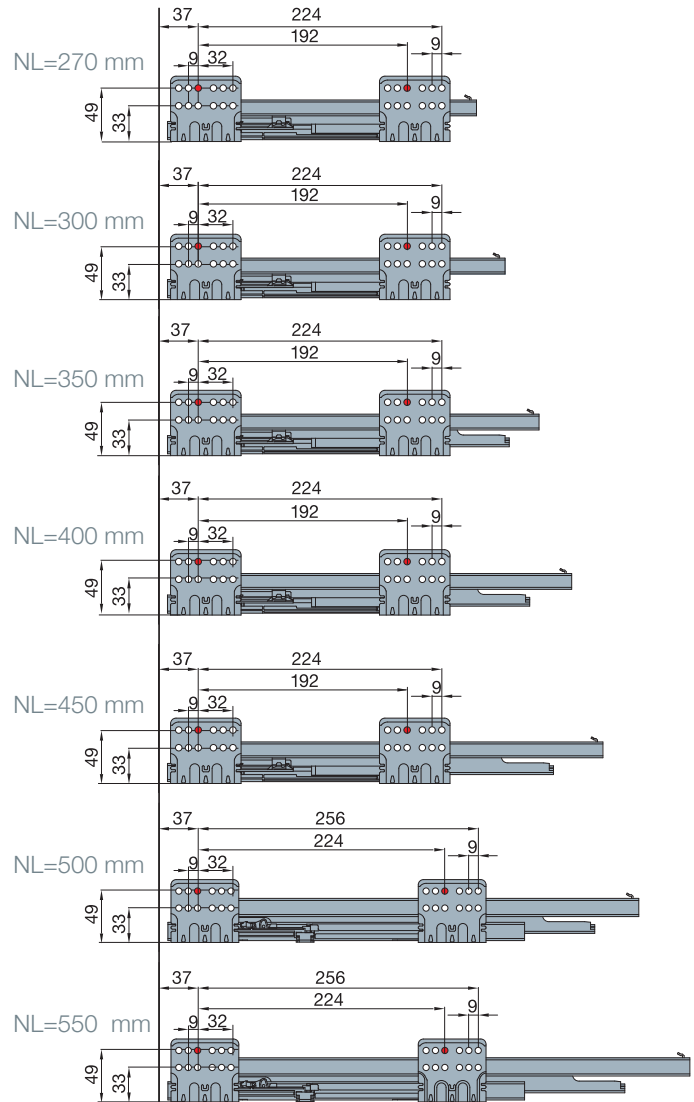
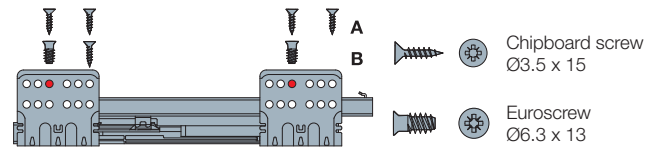
Mounting dimensions for the back panel



Installation dimensions for the front panel



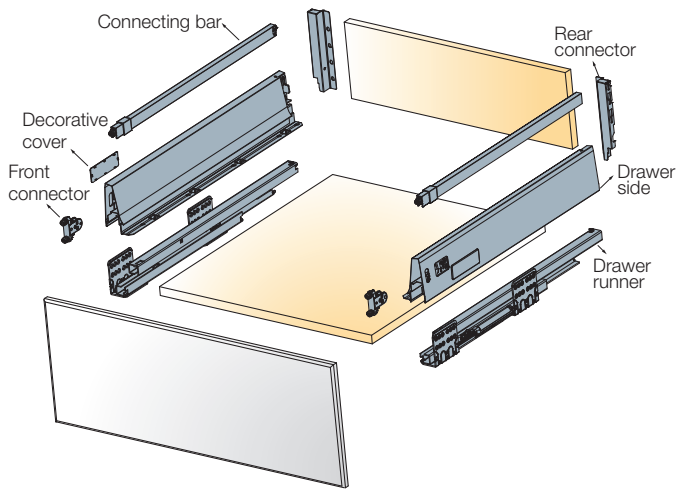
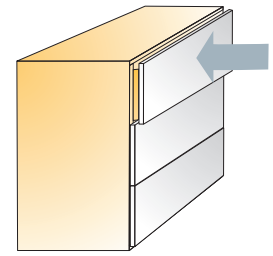
Drawer runner fixing positions



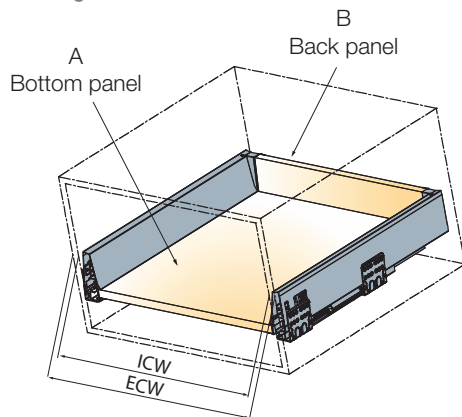
A trial mounting is always recommended. For further information please contact Titus Tekform.

Download supporting documentation from the Titus Tekform website titustekform.com.au

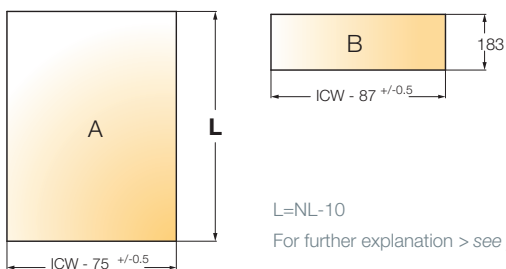
Tekform Drawer DW182



Cutting dimensions details



ECW: External cabinet width
 ICW: Internal cabinet width
 NL: Nominal length of drawer

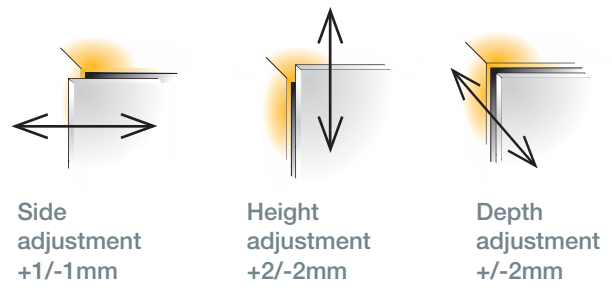


L = NL - 10
 For further explanation > see page 9

NL	with EasyFix front connector	with Screw-in front connector		
Nominal length				
	Item number for a set	Item number for a set	White	Anthracite Grey
270	650.8227 >	650.8927 >	150K	180
300	650.8230 >	650.8930 >	150K	180
350	650.8235 >	650.8935 >	150K	180
400	650.8240 >	650.8940 >	150K	180
450	650.8245 >	650.8945 >	150K	180
500	650.8250 >	650.8950 >	150K	180
550	650.8255 >	650.8955 >	150K	180
Assembly instructions > see page 36				
One set consists of				
Drawer sides				2 pcs
Drawer runner				2 pcs
Connecting bars				2 pcs
*Front connectors				2 pcs
Rear connectors				2 pcs
Decorative covers				2 pcs
Mounting instructions				1 pce

- Drawer runner type
- Load capacity
- Minimal height per drawer required
- Wooden back panel thickness
- Wooden bottom panel thickness

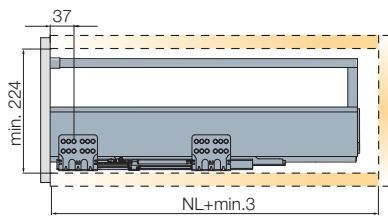
full extension
40kg
224mm
16mm
16mm



For further explanation > see page 11-12

Installation dimensions

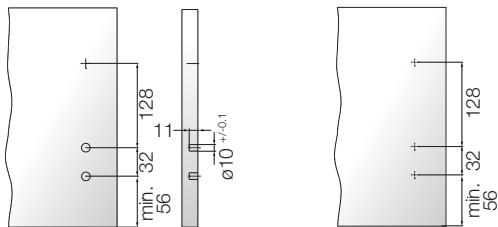
Minimum space required for the cabinet



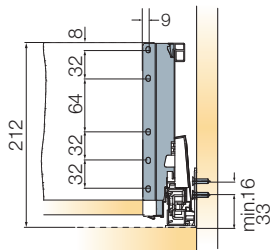
Drilling dimensions for the front panel

EasyFix attachment

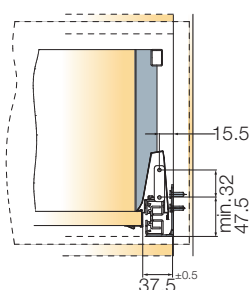
Screw-in attachment



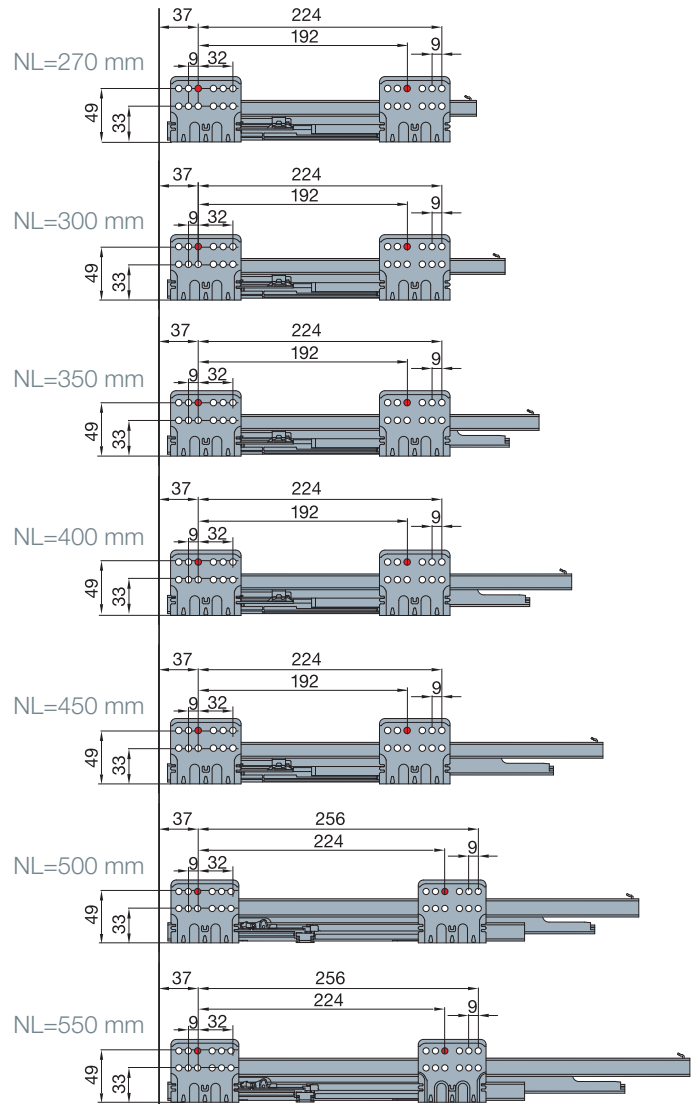
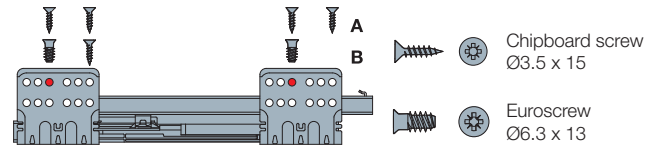
Mounting dimensions for the back panel



Installation dimensions for the front panel



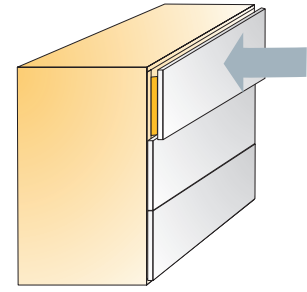
Drawer runner fixing positions



A trial mounting is always recommended. For further information please contact Titus Tekform.
Download supporting documentation from the Titus Tekform website titustekform.com.au

Tekform Drawer

Industrial Packaging



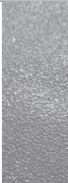


Drawer runner



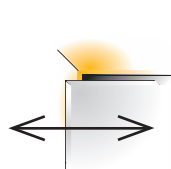
Drawer side



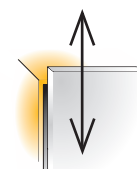
	NL				
	Nominal length	Item number for a set	Zinc plated	White	Anthracite Grey
Left	270	660.8A27 >	040		
	300	660.8A30 >	040		
	350	660.8A35 >	040		
	400	660.8A40 >	040		
	450	660.8A45 >	040		
	500	660.8A50 >	040		
	550	660.8A55 >	040		
Right	270	660.8B27 >	040		
	300	660.8B30 >	040		
	350	660.8B35 >	040		
	400	660.8B40 >	040		
	450	660.8B45 >	040		
	500	660.8B50 >	040		
	550	660.8B55 >	040		
Left	270	660.8C27 >		150	180
	300	660.8C30 >		150	180
	350	660.8C35 >		150	180
	400	660.8C40 >		150	180
	450	660.8C45 >		150	180
	500	660.8C50 >		150	180
	550	660.8C55 >		150	180
Right	270	660.8C27 >		150	180
	300	660.8C30 >		150	180
	350	660.8C35 >		150	180
	400	660.8C40 >		150	180
	450	660.8C45 >		150	180
	500	660.8C50 >		150	180
	550	660.8C55 >		150	180

Assembly instructions > see page 36
 Installation dimensions and Drawer runner fixing
 positions > see pages 15, 17 or 19

- Drawer runner type
 - Load capacity
 - Minimal height per drawer required
 - Wooden back panel thickness
 - Wooden bottom panel thickness
- full extension
40kg
224mm
16mm
16mm



Side adjustment
+1/-1mm



Height adjustment
+2/-2mm



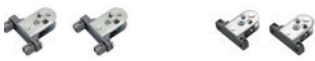



Depth adjustment
+/-2mm



All bulk packaging parts are available upon special request.

For further explanation > see page 11-12

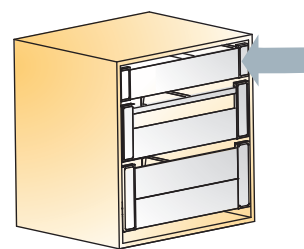
	NL	Nominal length	Item number		
			White	Anthracite Grey	
Drawer runner 		270	650.8727 >	150	185
		300	650.8730 >	150	185
		350	650.8735 >	150	185
		400	650.8740 >	150	185
		450	650.8745 >	150	185
		500	650.8750 >	150	185
		550	650.8755 >	150	185
Drawer runner 	For DW70		650.8901 >	150	185
	For DW145		650.8902 >	150	185
	For DW182		650.8903 >	150	185
Drawer side  EasyFix Screw-in	EasyFix		650.8907 >		380
	Screw-in		650.8905 >		380
Drawer runner 	Tekform by Titus		650.8904 >	350	385
	Generic		650.8906 >	350	385



A trial mounting is always recommended. For further information please contact Titus Tekform.

Download supporting documentation from the Titus Tekform website titustekform.com.au

Inner Drawer Front for Tekform Drawer DW70

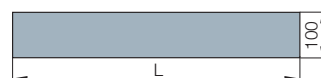


Inner drawer front, assembled



Made of aluminium and plastic

Front panel



Cutting dimension= ICW-90

ICW > see page 23

Made of aluminium

Front bracket set DW70
(L+R)

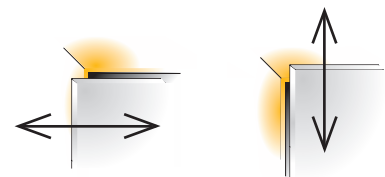
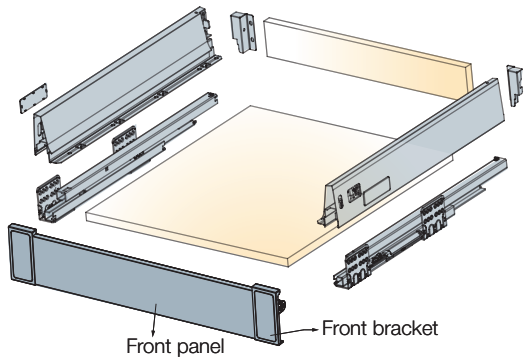


Made of plastic and aluminium

Thickness of carcass side panel/2	ECW External cabinet width	L	Item number	White	Anthracite Grey
16	600	562	650.8501 >	511	512
16	800	762	650.8502 >	511	512
18	600	558	650.8498 >	511	512
18	800	758	650.8499 >	511	512
Assembly details > see page 42					
		600	650.8565 >	511	512
		800	650.8566 >	511	512
		900	650.8567 >	511	512
		1000	650.8568 >	511	512
		1200	650.8569 >	511	512
Assembly details > see page 42					
			650.8912 >	350	380
Assembly details > see page 42					



Bottom panel support
650.8908.350



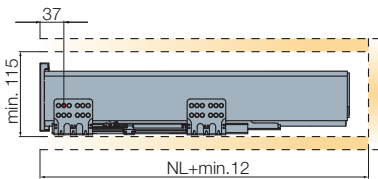
Side adjustment
+1/-1mm

Height adjustment
+2/-2mm

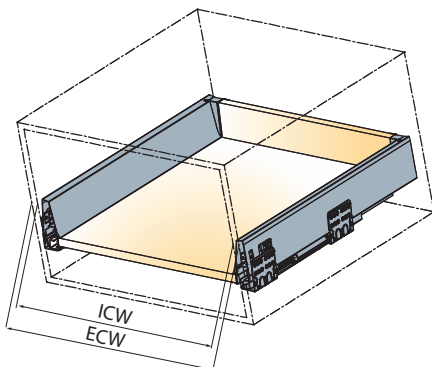
For further explanation > see page 11-12

Installation dimensions

Minimum space required for the cabinet

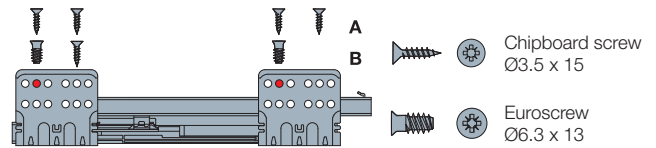


Cutting dimensions details

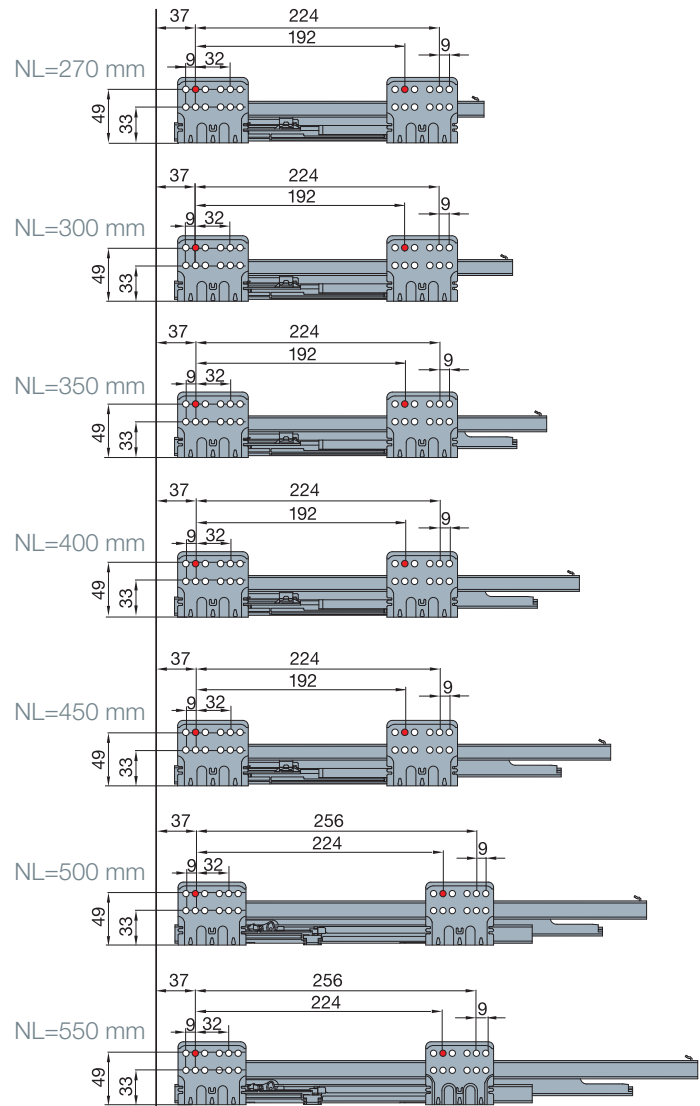


ECW: External cabinet width
ICW: Internal cabinet width
NL: Nominal length of drawer

Drawer runner fixing positions



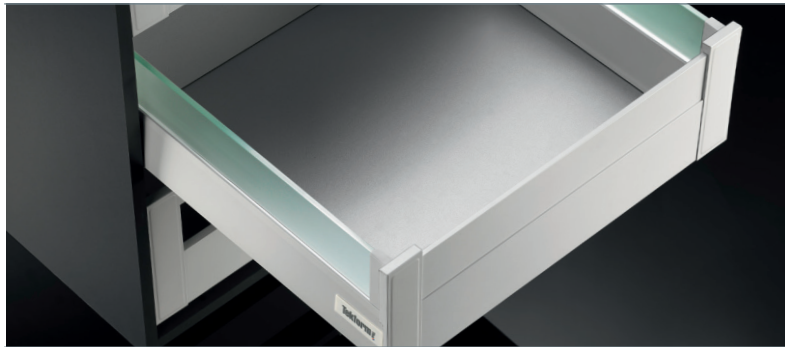
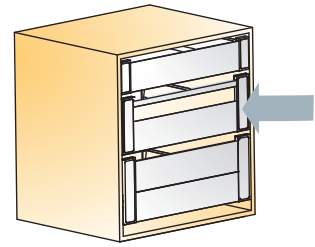
⚠ Use the second hole for runner fixing.



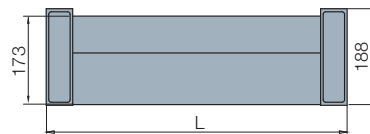
A trial mounting is always recommended. For further information please contact Titus Tekform.

Download supporting documentation from the Titus Tekform website titustekform.com.au

Inner Drawer Front for Tekform Drawer DW145 With Extension Panel



Inner drawer front, assembled



Made of aluminium and plastic

Front panel



Cutting dimension= ICW-90

ICW > see page 25

Made of aluminium

Front bracket (L+R) DW145



Made of plastic and aluminium

Extension panel



Cutting dimension= ICW-98

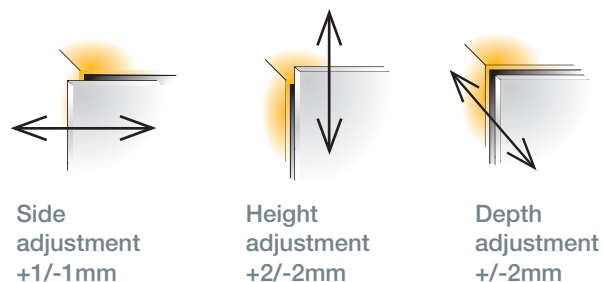
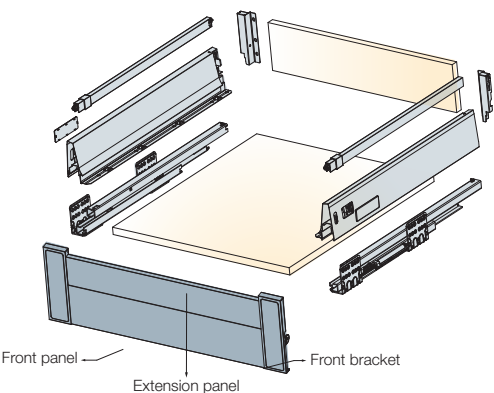
ICW > see page 25

Made of aluminium

Thickness of carcass side panel	ECW External cabinet width	L	Item number	White	Anthracite Grey
16	600	562	650.8503 >	511	512
16	800	752	650.8504 >	511	512
18	600	558	650.8515 >	511	512
18	800	758	650.8516 >	511	512
Assembly details > see page 42					
		600	650.8565 >	511	512
		800	650.8566 >	511	512
		900	650.8567 >	511	512
		1000	650.8568 >	511	512
		1200	650.8569 >	511	512
Assembly details > see page 42					
			650.8913 >	350	380
Assembly details > see page 42					
		600	650.8590 >	511	512
		800	650.8591 >	511	512
		900	650.8592 >	511	512
		1000	650.8593 >	511	512
		1200	650.8594 >	511	512
Assembly details > see page 42					



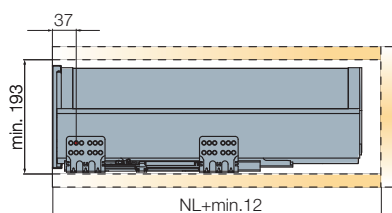
Bottom panel support
650.8908.350



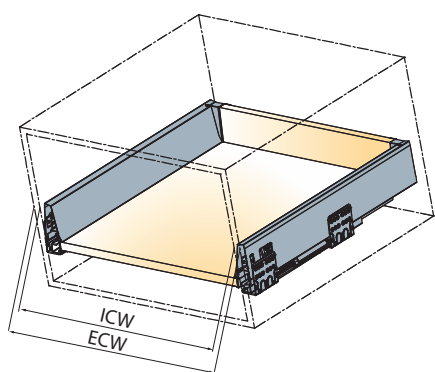
For further explanation > see page 11-12

Installation dimensions

Minimum space required for the cabinet

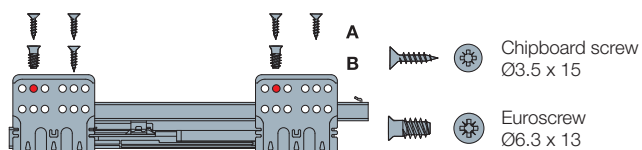


Cutting dimensions details

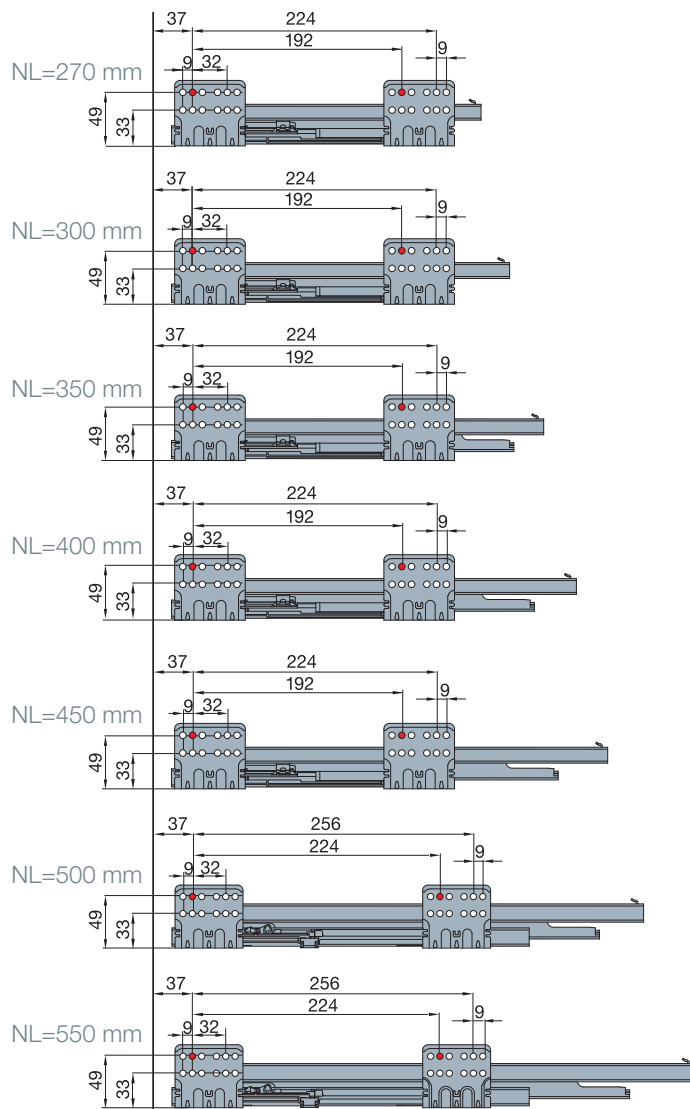


ECW: External cabinet width
ICW: Internal cabinet width
NL: Nominal length of drawer

Drawer runner fixing positions



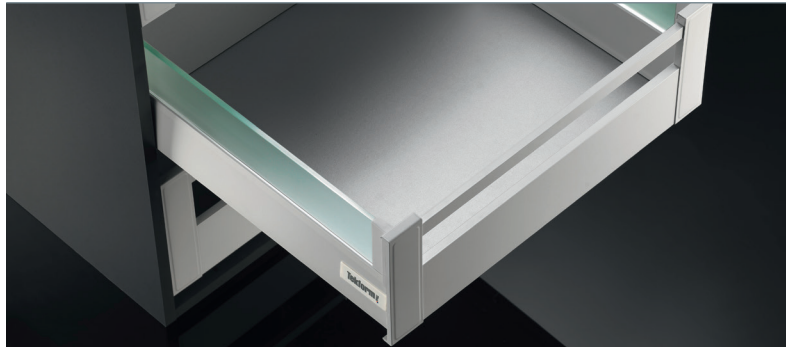
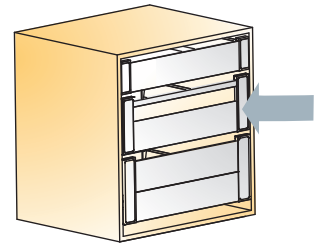
⚠ Utilizzare il secondo foro per fissare la guida.



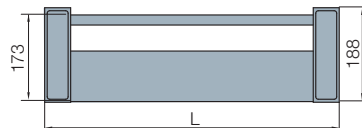
A trial mounting is always recommended. For further information please contact Titus Tekform.

Download supporting documentation from the Titus Tekform website titustekform.com.au

Inner Drawer Front for Tekform Drawer DW145 With Square Bar



Inner drawer front, assembled



Made of aluminium and plastic

Front panel



Cutting dimension= ICW-90

ICW > see page 27

Made of aluminium

Front bracket (L+R) DW145



Made of plastic and aluminium

Square bar



Cutting dimension= ICW-92

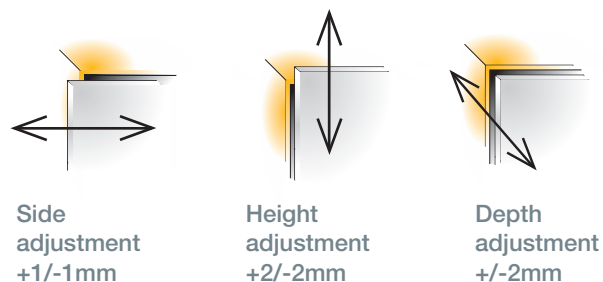
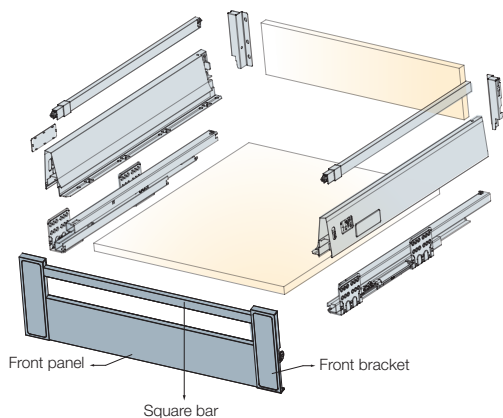
ICW > see page 27

Made of aluminium

Thickness of carcass side panel	ECW External cabinet width	L	Item number	White	Anthracite Grey
16	600	562	650.8505 >	511	512
16	800	762	650.8506 >	511	512
18	600	558	650.8517 >	511	512
18	800	758	650.8518 >	511	512
<p>Assembly details > see page 42</p>					
		600	650.8565 >	511	512
		800	650.8566 >	511	512
		900	650.8567 >	511	512
		1000	650.8568 >	511	512
		1200	650.8569 >	511	512
<p>Assembly details > see page 42</p>					
			650.8914 >	350	380
<p>Assembly details > see page 42</p>					
		600	650.8600 >	511	512
		800	650.8601 >	511	512
		900	650.8602 >	511	512
		1000	650.8603 >	511	512
		1200	650.8604 >	511	512
<p>Assembly details > see page 42</p>					



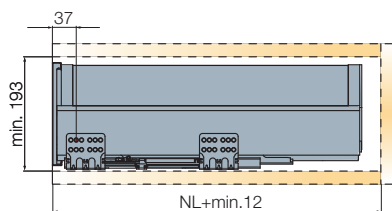
Bottom panel support
650.8908.350



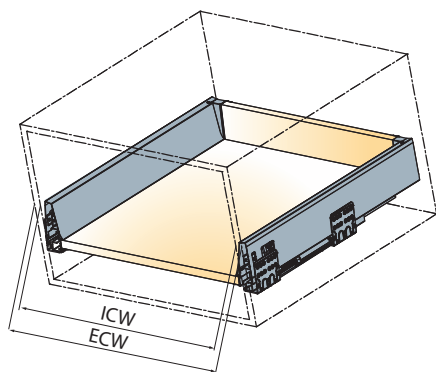
For further explanation > see page 11-12

Installation dimensions

Minimum space required for the cabinet

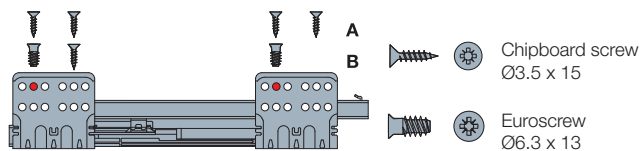


Cutting dimensions details

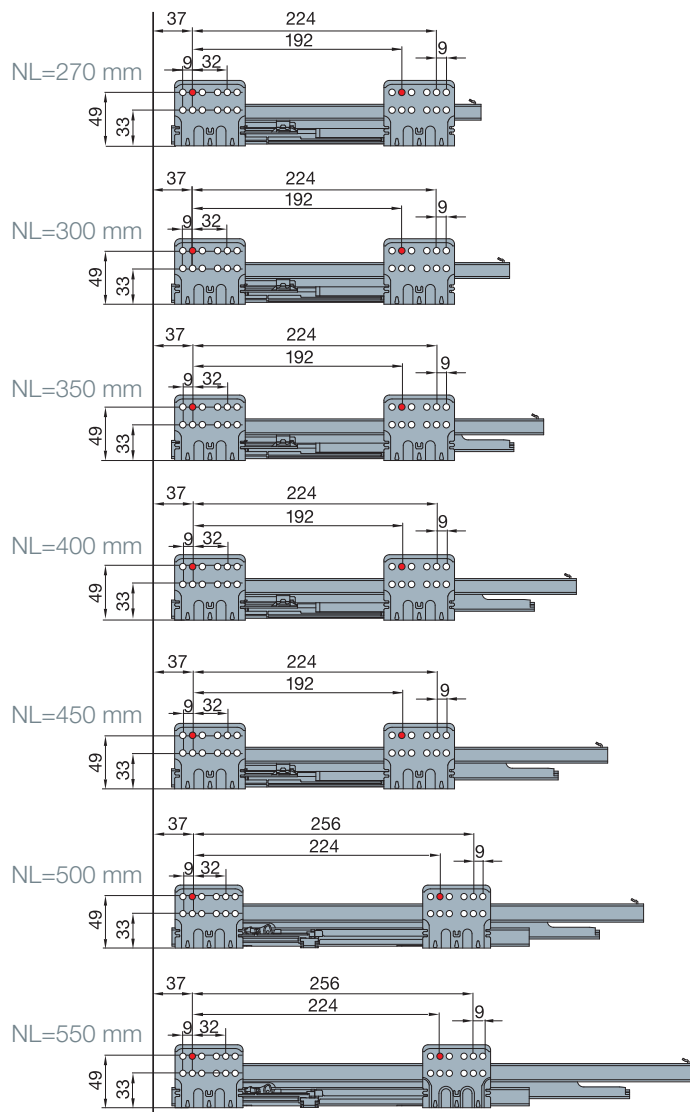


ECW: External cabinet width
 ICW: Internal cabinet width
 NL: Nominal length of drawer

Drawer runner fixing positions

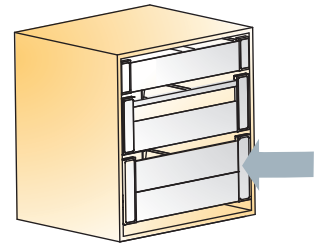


⚠ Use the second hole for runner fixing.

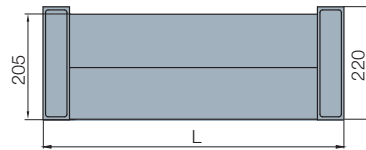


⚠ A trial mounting is always recommended. For further information please contact Titus Tekform.
 Download supporting documentation from the Titus Tekform website titustekform.com.au

Inner Drawer Front for Tekform Drawer DW182 With Extension Panel



Inner drawer front, assembled



Made of aluminium and plastic

Front panel



Cutting dimension= ICW-90

ICW > see page 29

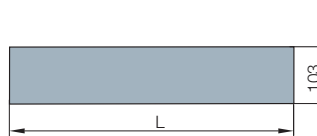
Made of aluminium

Front bracket (L+R) DW182



Made of plastic and aluminium

Extension panel



Cutting dimension= ICW-98

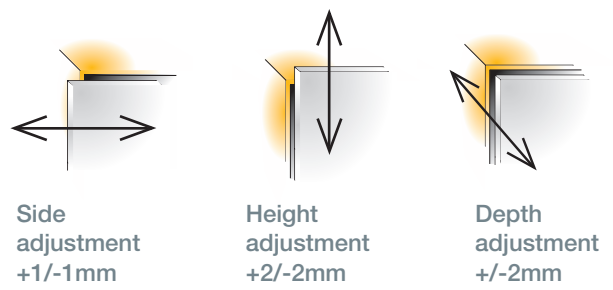
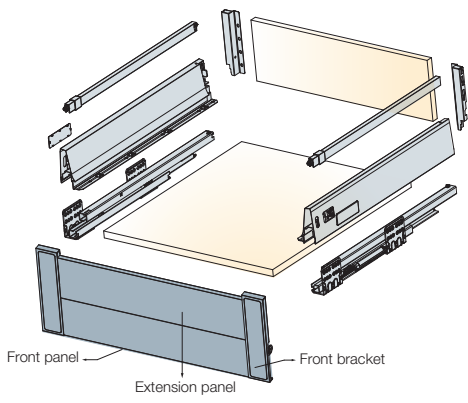
ICW > see page 29

Made of aluminium

Thickness of carcass side panel	ECW External cabinet width	L	Item number	White	Anthracite Grey
16	600	562	650.8509 >	511	512
16	800	762	650.8510 >	511	512
18	600	558	650.8521 >	511	512
18	800	758	650.8522 >	511	512
		600	650.8565 >	511	512
		800	650.8566 >	511	512
		900	650.8567 >	511	512
		1000	650.8568 >	511	512
		1200	650.8569 >	511	512
Assembly details > see page 42					
			650.8915 >	350	380
Assembly details > see page 42					
		600	650.8610 >	511	512
		800	650.8611 >	511	512
		900	650.8612 >	511	512
		1000	650.8613 >	511	512
		1200	650.8614 >	511	512
Assembly details > see page 42					



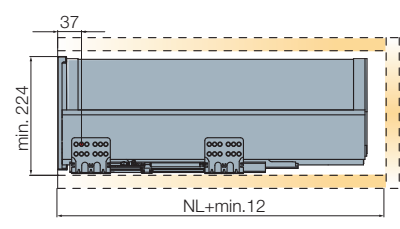
Bottom panel support
650.8908.350



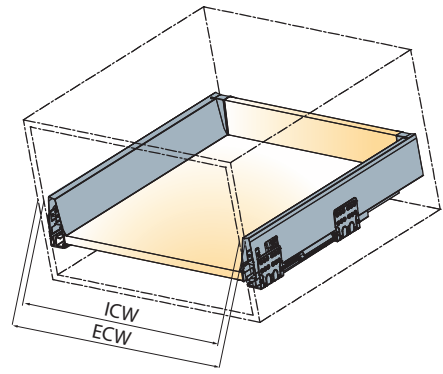
For further explanation > see page 11-12

Installation dimensions

Minimum space required for the cabinet

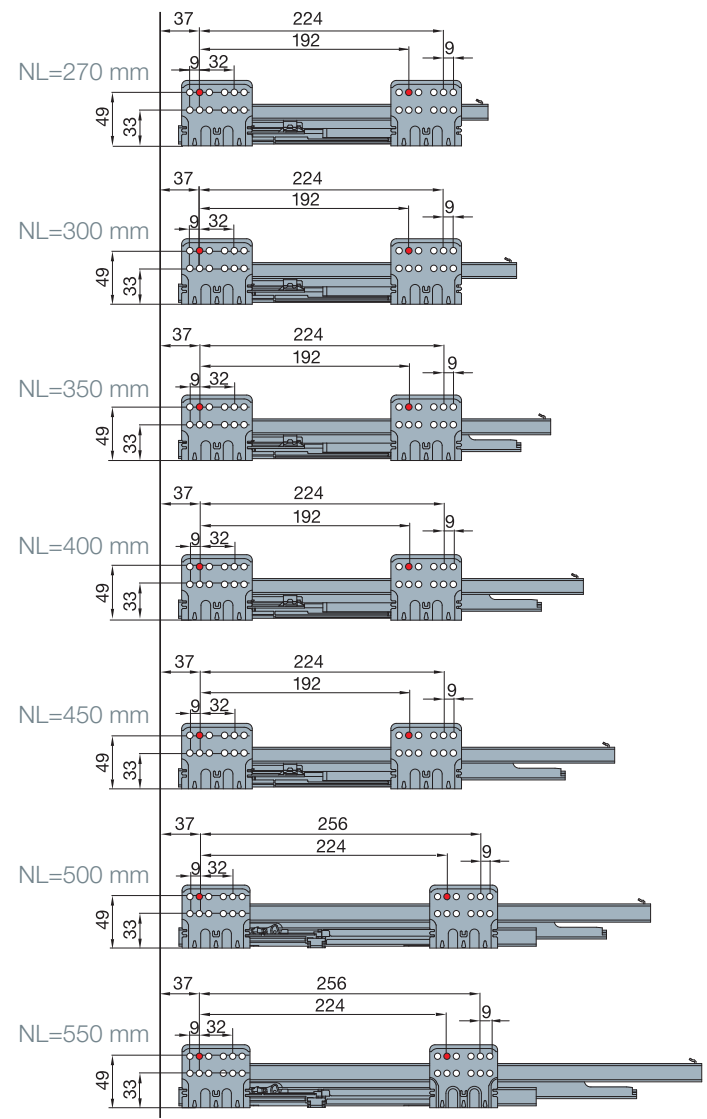
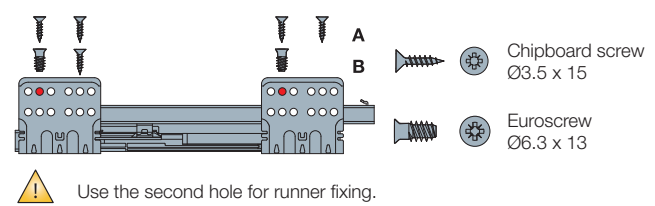


Cutting dimensions details



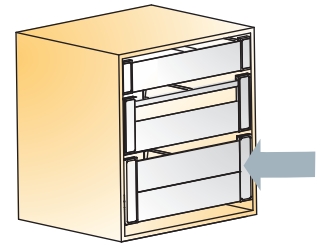
ECW: External cabinet width
ICW: Internal cabinet width
NL: Nominal length of drawer

Drawer runner fixing positions

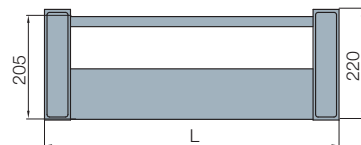


⚠ A trial mounting is always recommended. For further information please contact Titus Tekform.
Download supporting documentation from the Titus Tekform website titustekform.com.au

Inner Drawer Front for Tekform Drawer DW182 With Square Bar



Inner drawer front, assembled



Made of aluminium and plastic

Front panel



Cutting dimension= ICW-90

ICW > see page 31

Made of aluminium

Front bracket (L+R) DW182



Made of plastic and aluminium

Square bar



Cutting dimension= ICW-92

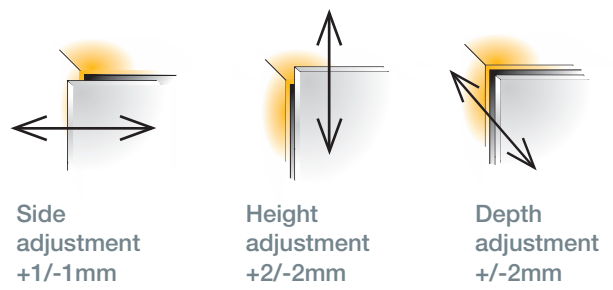
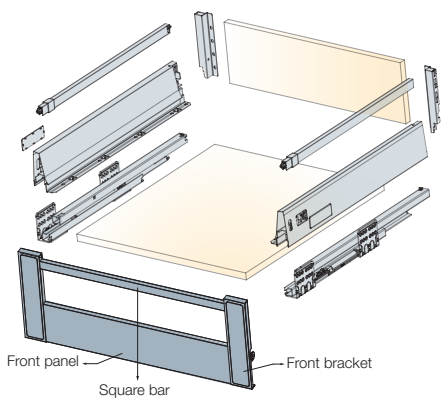
ICW > see page 31

Made of aluminium

Thickness of carcass side panel	ECW External cabinet width	L	Item number	White	Anthracite Grey
16	600	562	650.8511 >	511	512
16	800	762	650.8512 >	511	512
18	600	558	650.8523 >	511	512
18	800	758	650.8524 >	511	512
		600	650.8565 >	511	512
		800	650.8566 >	511	512
		900	650.8567 >	511	512
		1000	650.8568 >	511	512
		1200	650.8569 >	511	512
Assembly details > see page 42					
			650.8916 >	350	380
Assembly details > see page 42					
		600	650.8600 >	511	512
		800	650.8601 >	511	512
		900	650.8602 >	511	512
		1000	650.8603 >	511	512
		1200	650.8604 >	511	512
Assembly details > see page 42					



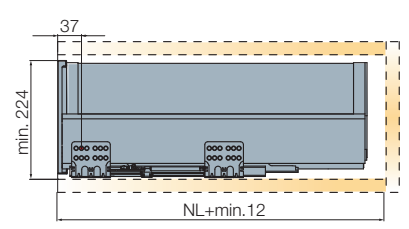
Bottom panel support
650.8908.350



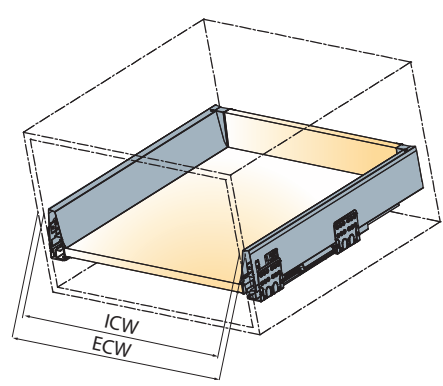
For further explanation > see page 11-12

Installation dimensions

Minimum space required for the cabinet

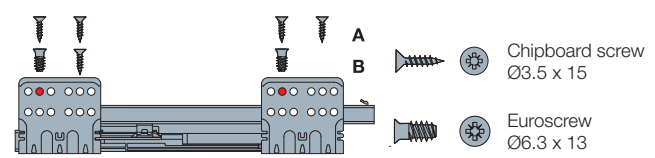


Cutting dimensions details

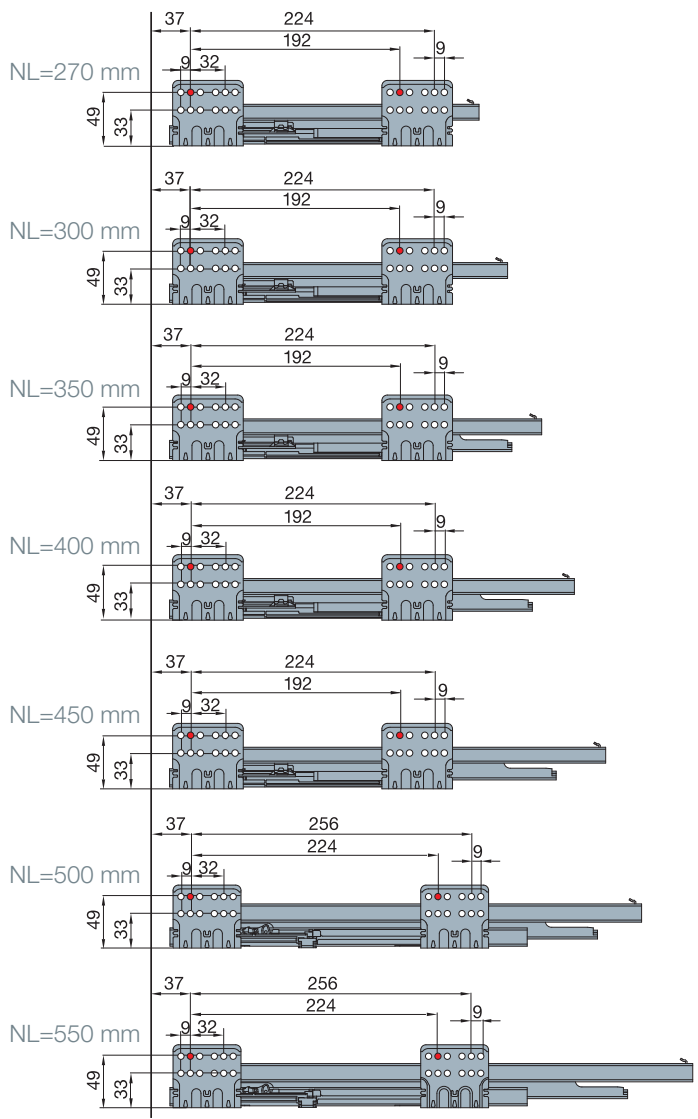


ECW: External cabinet width
ICW: Internal cabinet width
NL: Nominal length of drawer

Drawer runner fixing positions



⚠ Use the second hole for runner fixing.



⚠ A trial mounting is always recommended. For further information please contact Titus Tekform.
Download supporting documentation from the Titus Tekform website titustekform.com.au

Glass Sides 4mm

- 4mm glass sides must be applied with drawer side bars
- Tempered glass for improved user safety
- Depth front adjustment through side bars enabled



For DW145



Glass side



Glass clip

Glass side set



Glass clip set

Made of tempered glass, glass clip made of plastic

For DW182



Glass side



Glass clip

Glass side



Glass clip set

Made of tempered glass, glass clip made of plastic

Nominal length	Item number	NL			
		Frosted glass	Transparent glass	White	Anthracite Grey

270	650.8401 >	391	392		
300	650.8402 >	391	392		
350	650.8403 >	391	392		
400	650.8404 >	391	392		
450	650.8405 >	391	392		
500	650.8406 >	391	392		
550	650.8407 >	391	392		
	650.8484 >			350	380

Assembly instructions > see page 40

Glass side set = 2 pcs
Glass clip set = 2 pcs L + 2 pcs R

270	650.8427 >	391	392		
300	650.8430 >	391	392		
350	650.8435 >	391	392		
400	650.8440 >	391	392		
450	650.8445 >	391	392		
500	650.8450 >	391	392		
550	650.8455 >	391	392		
	650.8485 >			350	380

Assembly instructions > see page 40

Glass side set = 2 pcs
Glass clip set = 2 pcs L + 2 pcs R

Glass Sides 8mm

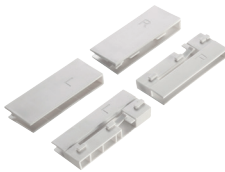
- 8mm glass sides don't require side bars
- Tempered glass for improved user safety



For DW145



Glass side



Glass clip

Glass side set



Glass clip set

Nominal length	Item number	Color			
		Frosted glass	Transparent glass	White	Grey
NL					

270	650.8460 >	391	392		
300	650.8461 >	391	392		
350	650.8462 >	391	392		
400	650.8463 >	391	392		
450	650.8464 >	391	392		
500	650.8465 >	391	392		
550	650.8466 >	391	392		
	650.8488 >			350	380

Assembly instructions > see page 41

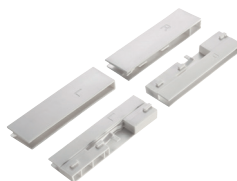
Glass side set = 2 pcs
Glass clip set = 2 pcs L + 2 pcs R

Made of tempered glass, glass clip made of plastic

For DW182



Glass side



Glass clip

Glass side set



Glass clip set

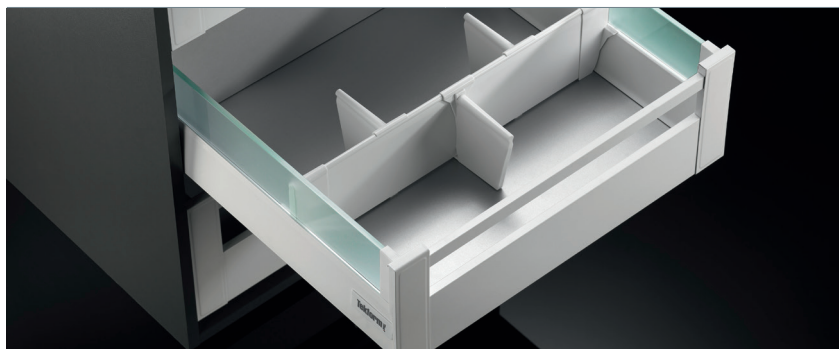
270	650.8467 >	391	392		
300	650.8468 >	391	392		
350	650.8469 >	391	392		
400	650.8470 >	391	392		
450	650.8471 >	391	392		
500	650.8472 >	391	392		
550	650.8473 >	391	392		
	650.8489 >			350	380

Assembly instructions > see page 41

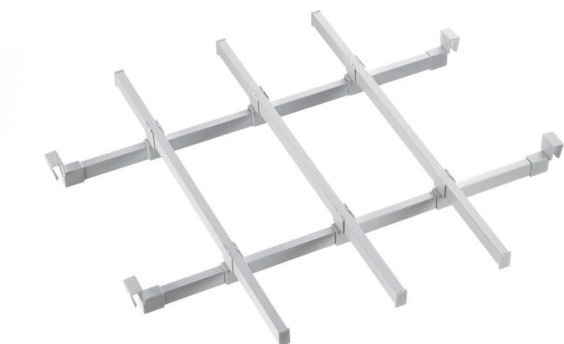
Glass side set = 2 pcs
Glass clip set = 2 pcs L + 2 pcs R

Made of tempered glass, glass clip made of plastic

Drawer Storage System

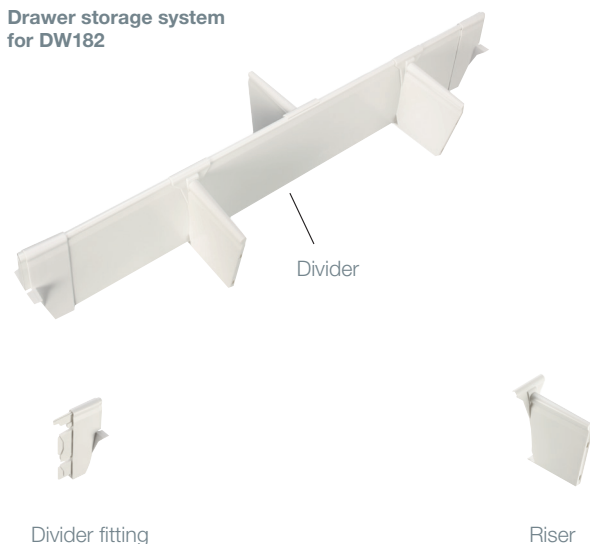


Drawer storage system for DW145



Made of aluminium and plastic


Drawer storage system for DW182



Made of aluminium and plastic

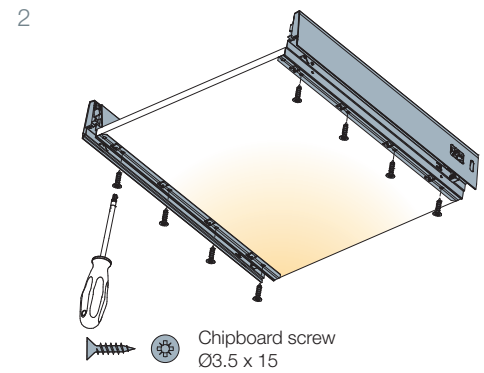
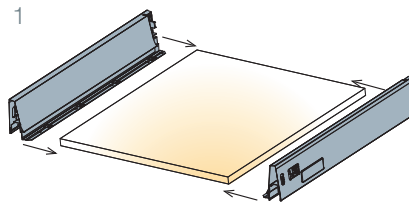
ECW	NL	Item number	White	Anthracite Grey
External cabinet width	Nominal length			
max.800	400	650.8770 >	511	512
max.800	450	650.8771 >	511	512
max.800	500	650.8772 >	511	512
max.800	550	650.8773 >	511	512
max.1200	400	650.8774 >	511	512
max.1200	450	650.8775 >	511	512
max.1200	500	650.8776 >	511	512
max.1200	550	650.8777 >	511	512
* Available upon special request > see page 3				
One set consists of:				
3 pcs longitudinal bars				
2 pcs transversal bars				
4 pcs bar fittings				
6 pcs cross connections				
Divider	600	650.8706 >	511	512
	800	650.8708 >	511	512
	900	650.8709 >	511	512
	1000	650.8710 >	511	512
	1200	650.8712 >	511	512
Riser		650.8703 >	350	380
Divider fitting		650.8704 >	350	380

Assembly Instructions

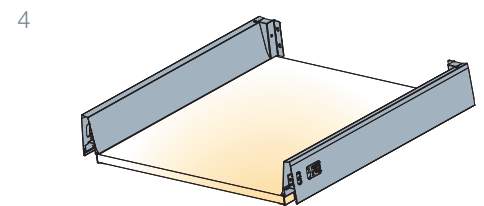
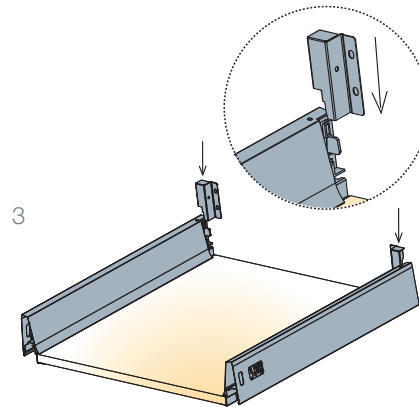
 Screws are not included

Assembly Sequence

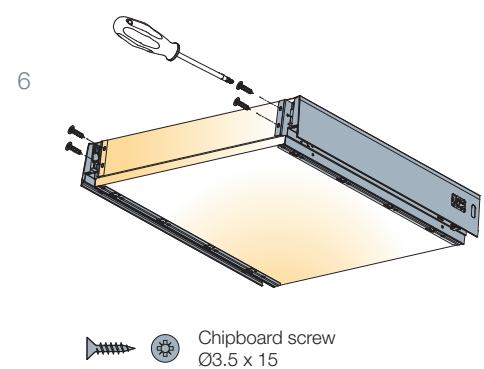
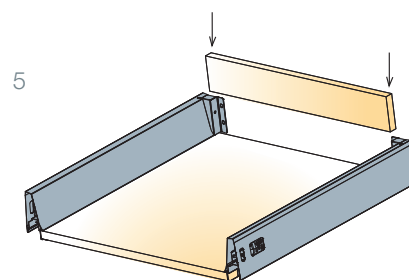
Connect the drawer sides to the bottom panel (1) and fix it with screws (2)



Insert the rear connector vertically (3) and push it downwards into recess in the drawer side (4)



Insert the back panel (5) and fix it with screws (6)



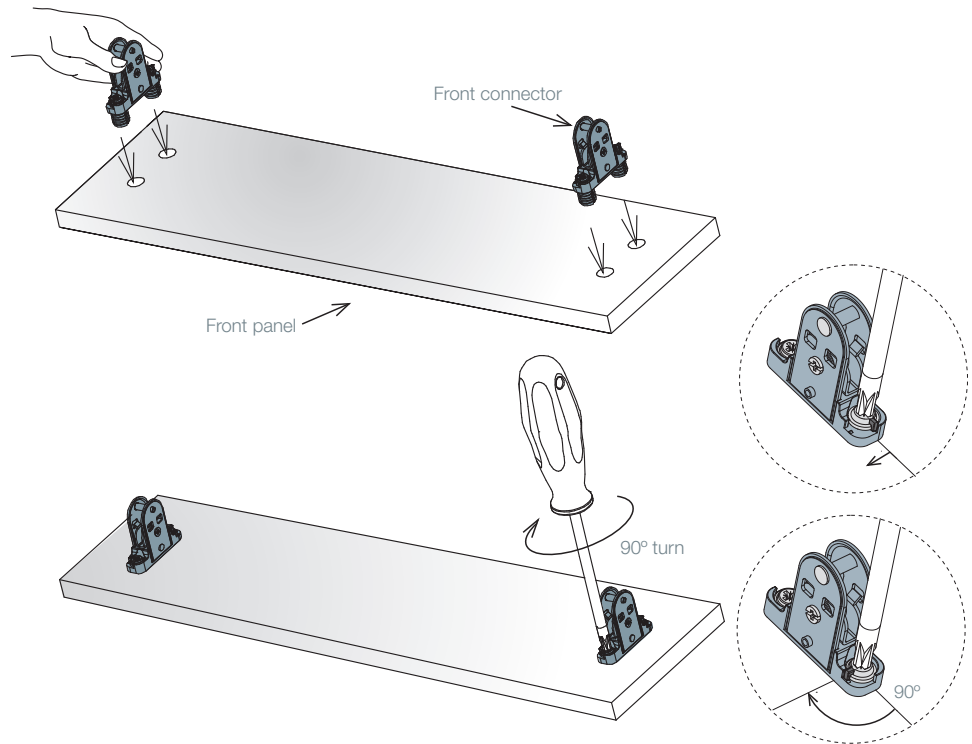


Screws are not included

Insertion of Front Connectors

EasyFix

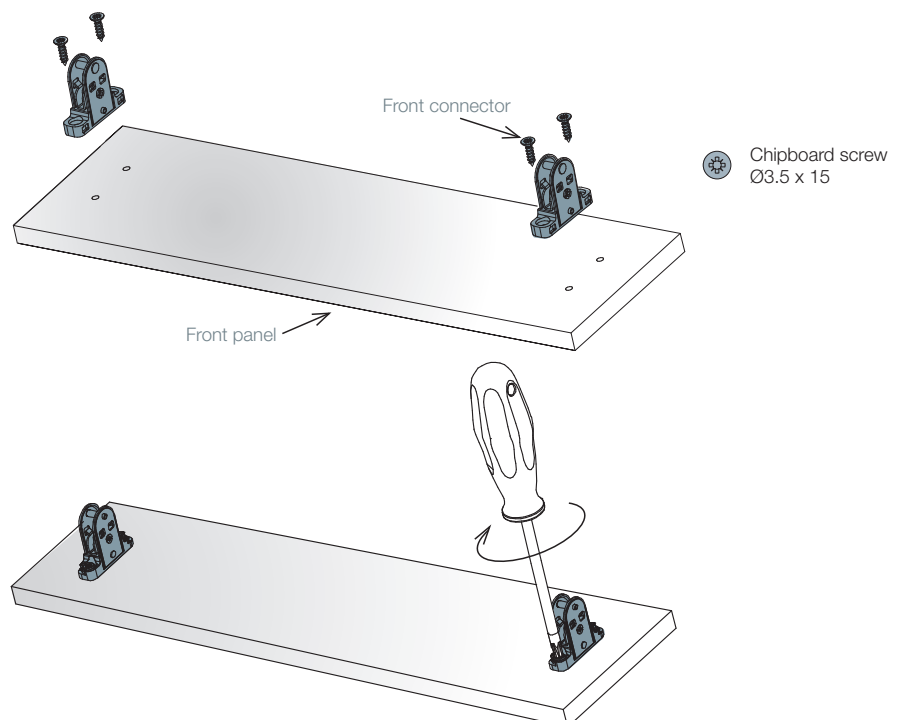
Insert the front connectors into holes on the front panel



Turn the screws for 90° into locked position

Screw-in fixing

Use Ø3 x 15mm screws for fixing

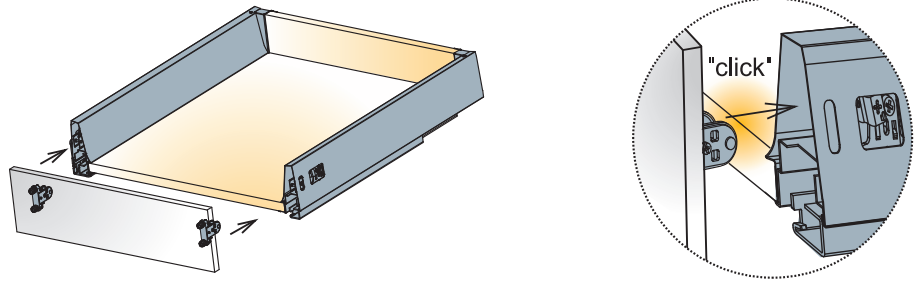


Assembly Instructions

Front Panel Mounting / Removal

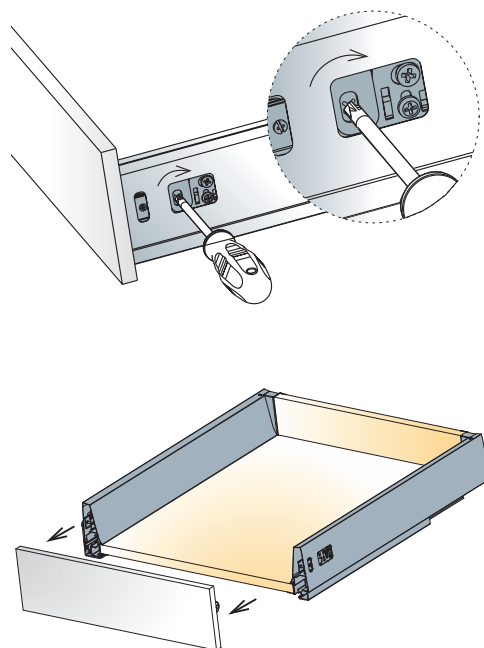
Mounting

Attach the front panel to the drawer and press to click



Removal

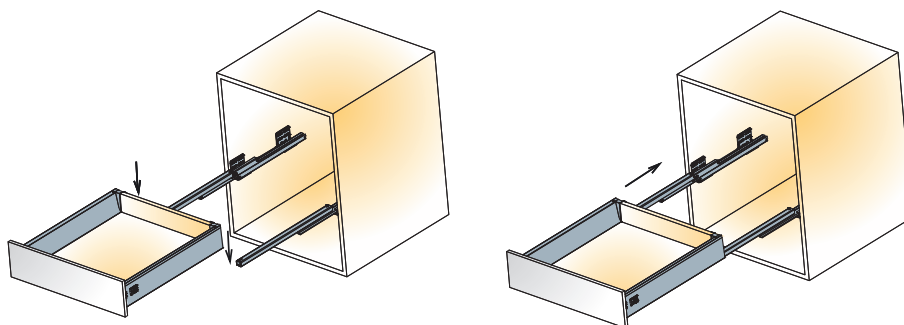
Rotate to disengage



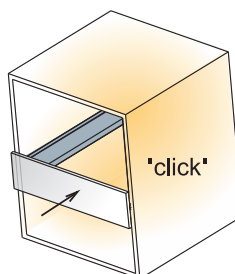
Drawer Insertion / Removal

Insertion

Put the drawer horizontally on the runners and push towards the cabinet until you hear the drawer is locked

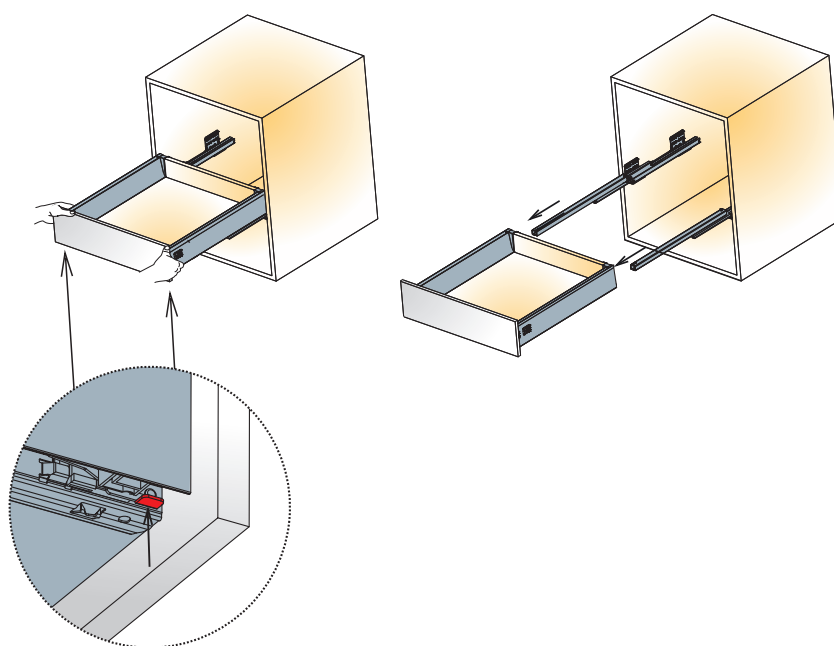


Push to fully close



Removal

Press the button under a drawer keep pressed to pull the drawer out

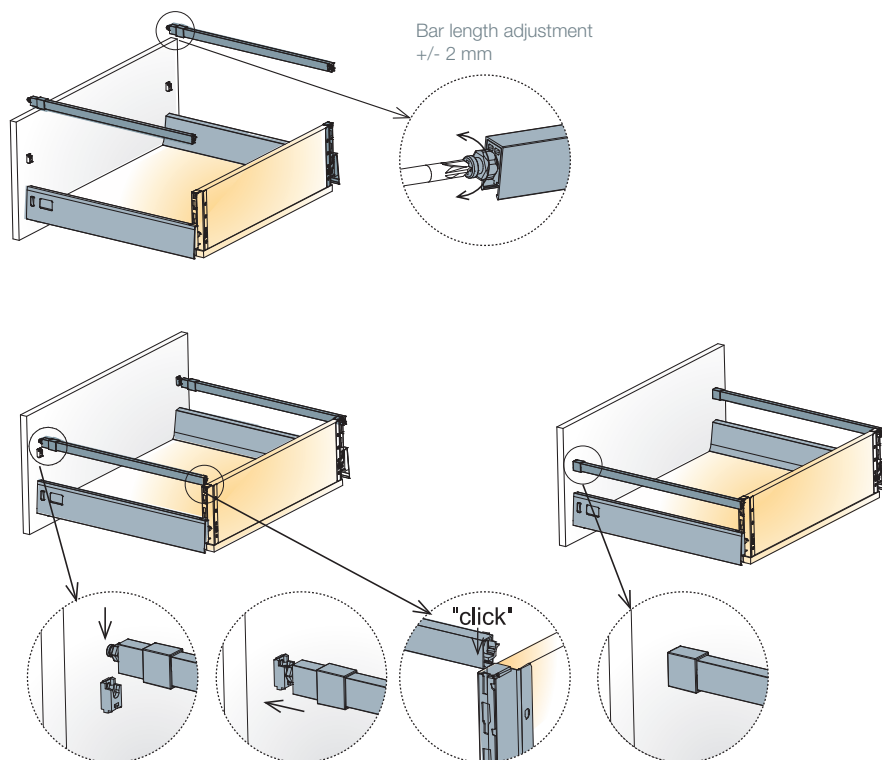


Нажать на

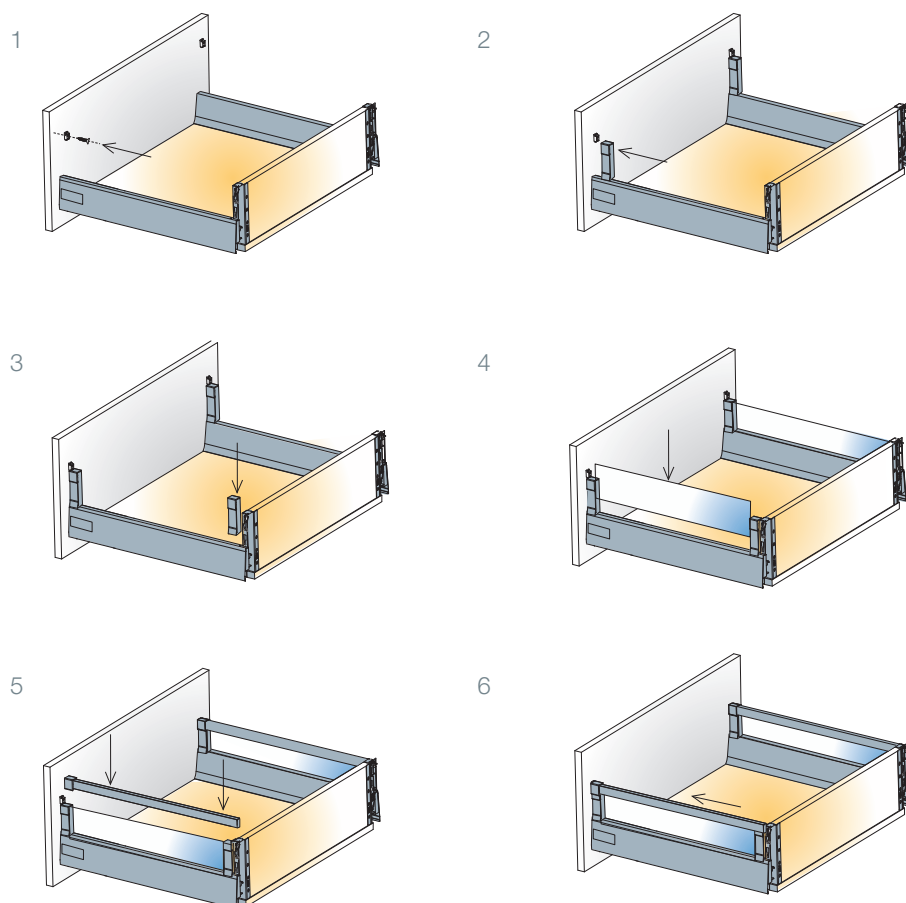
Accessories Mounting

Mounting of Connecting Bars and Glass sides 4mm

Connecting bars
(for DW145 and DW182)



Glass sides 4mm

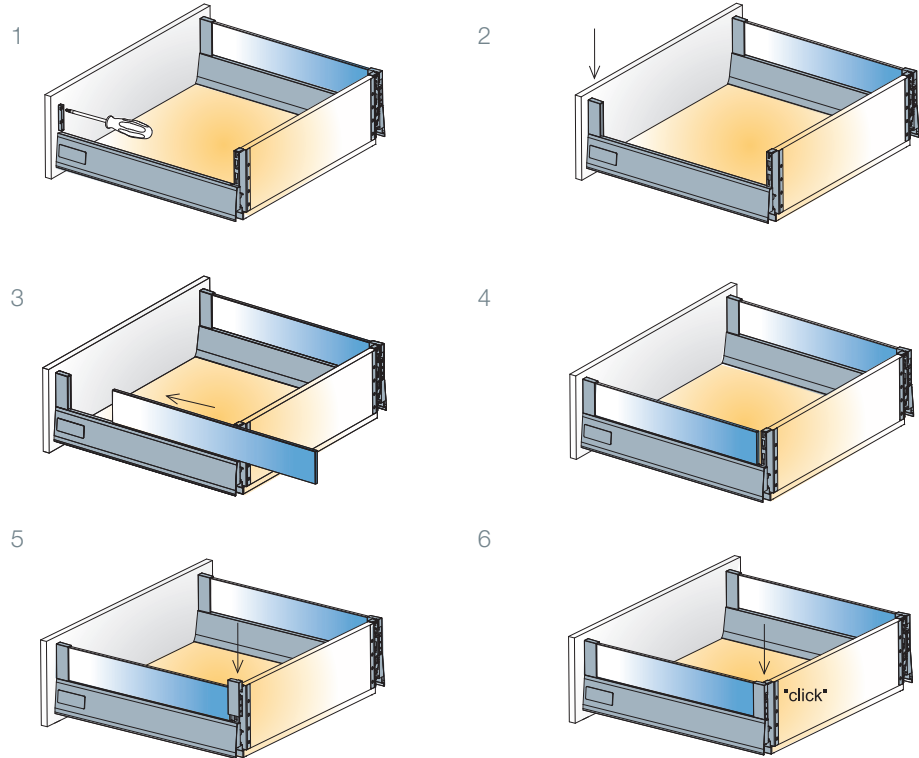




Screws are not included

Mounting of Glass Sides 8mm

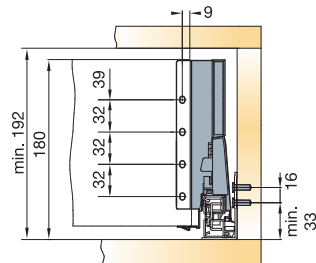
Glass sides 8mm



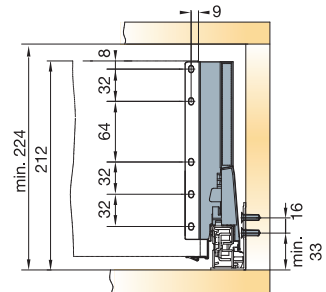
Drilling dimension for Glass sides 8mm

Back panel mounting dimensions

Tekform drawer DW145

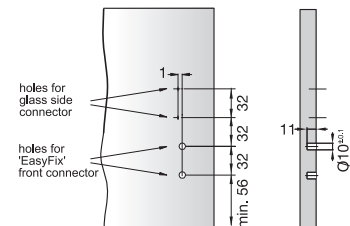
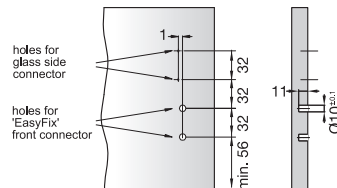


Tekform drawer DW182

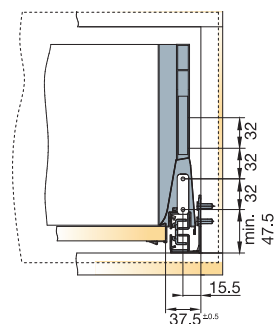
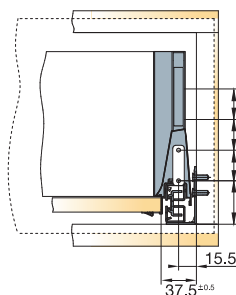


Front panel drilling dimensions

'EasyFix' front connector



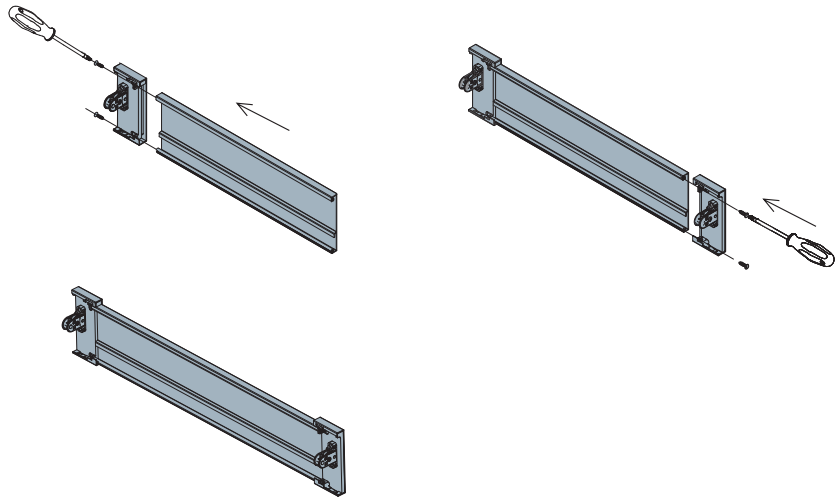
Installation dimensions for front panel



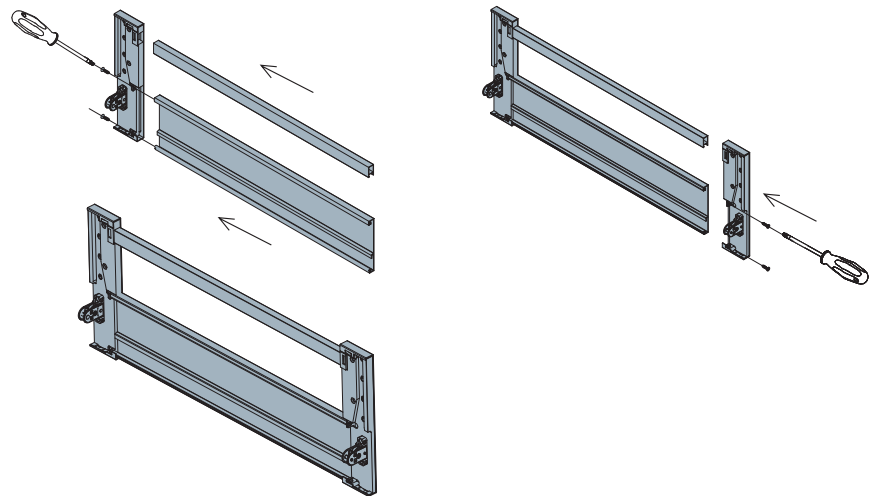
Accessories Mounting

Assembly of Inner Drawer Front

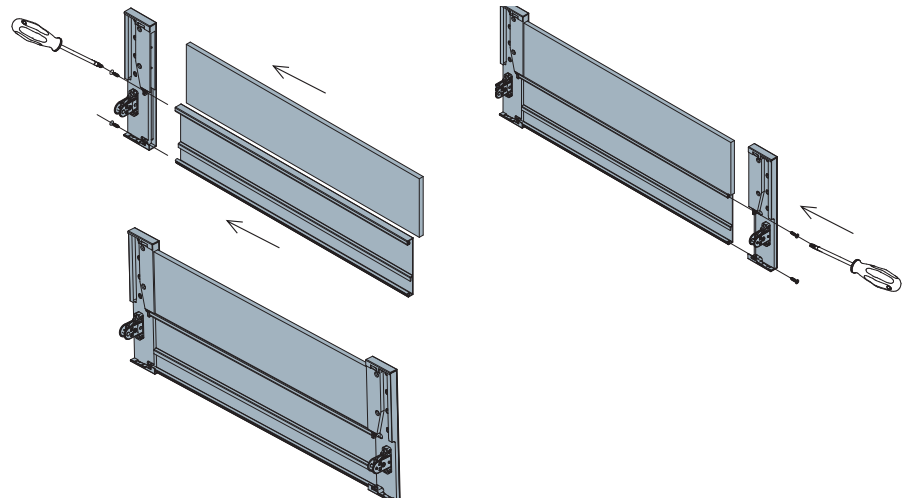
DW70



DW145 and DW182
with bar



DW145 and DW182
with extension panel



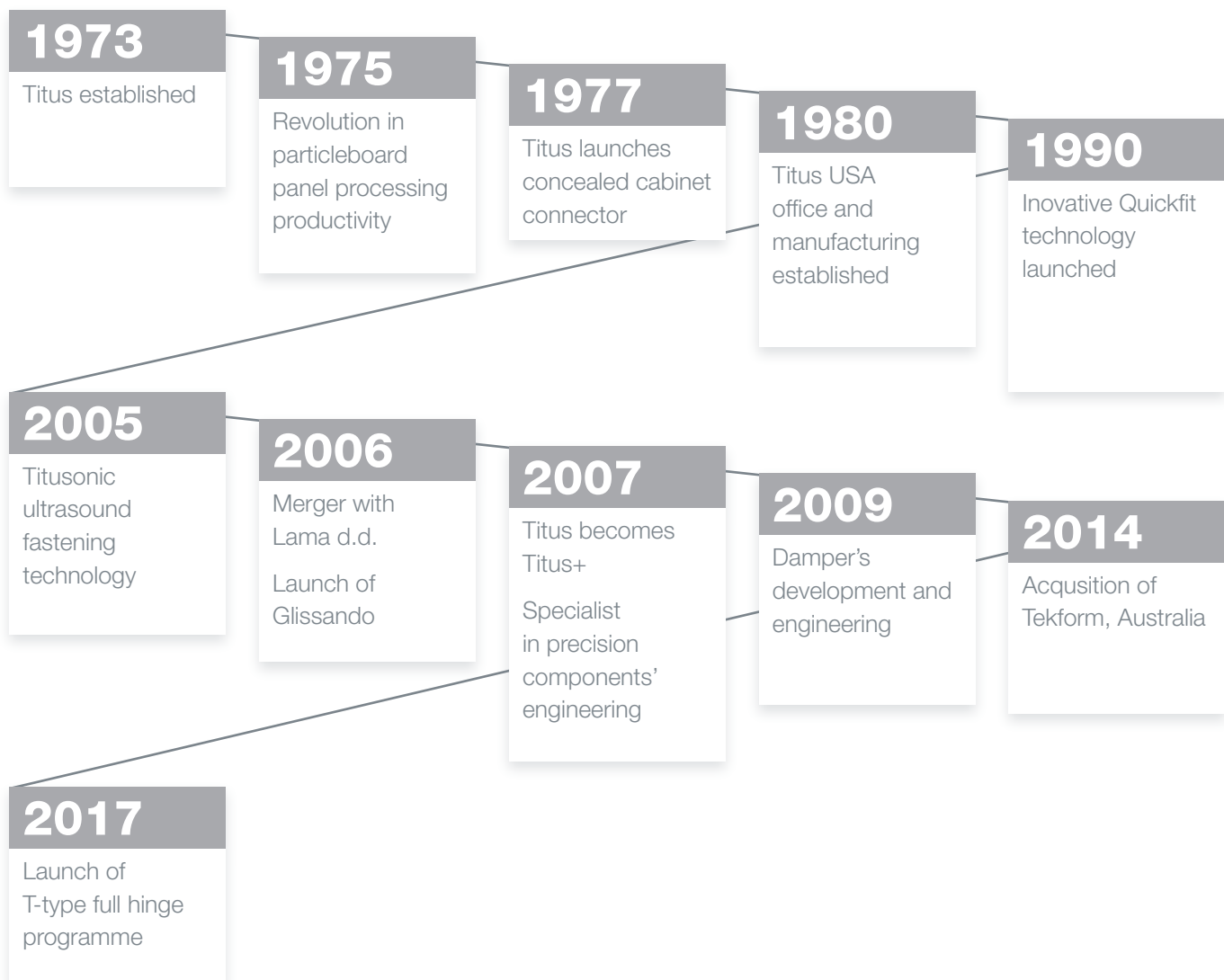
The Titus Group Profile

Titus Group

Titus focuses on the design, manufacture and distribution of connectors, concealed hinges drawers and soft closing mechanisms in furniture and household appliances.

Titus Group is owned and managed from its headquarters in United Kingdom. We are able to provide products and services to every customer around the world based on manufacturing facilities in Europe, North America, China, SE Asia, Australia and New Zealand.

Quickfit technology makes Titus the World leader in connectors for RTA furniture



Vision

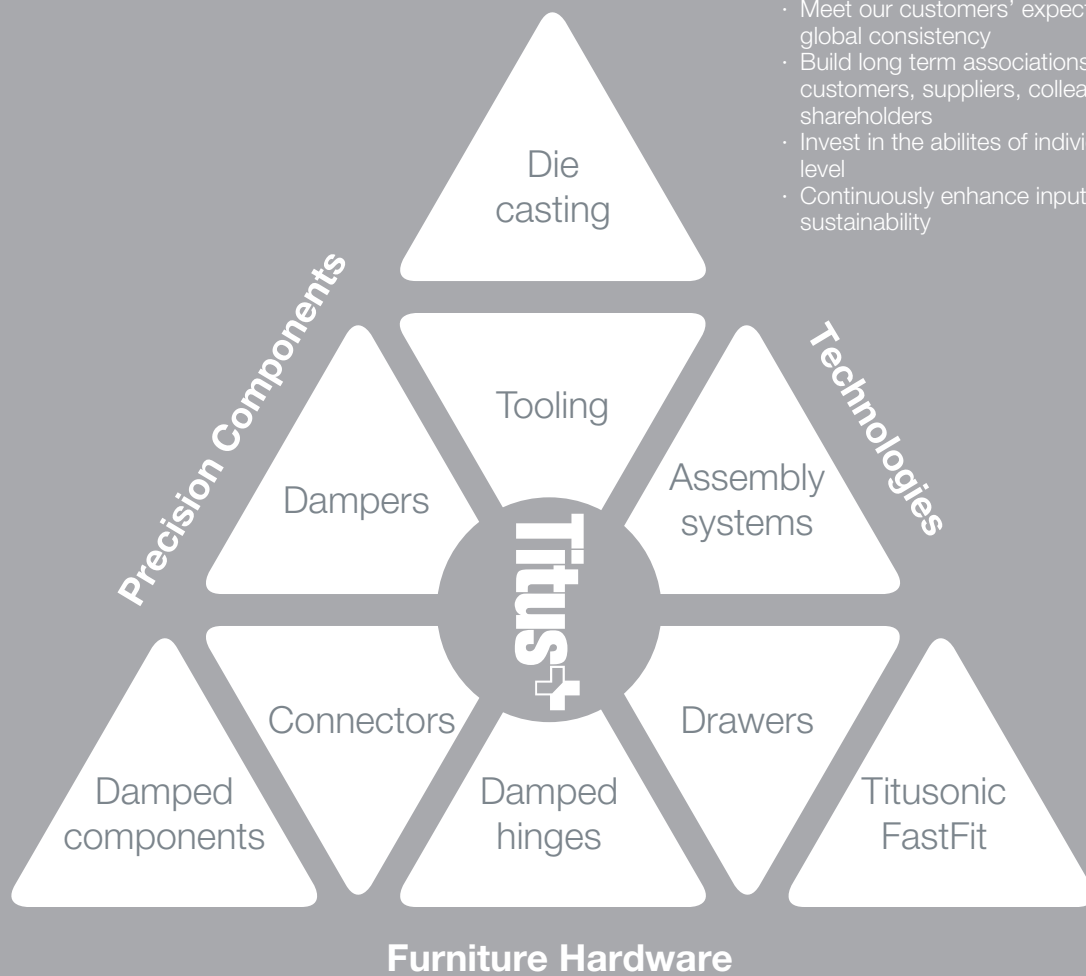
The world's best engineering for precision components

Mission

To provide manufacturers with components' solutions that improve competitiveness

Titus Business Philosophies and Principles

- Gain total knowledge of our customers and their markets
- Focus on identifying and creating high volume component niches
- Meet our customers' expectations with global consistency
- Build long term associations with customers, suppliers, colleagues and shareholders
- Invest in the abilities of individuals at every level
- Continuously enhance input efficiency and sustainability



Furniture Hardware

- Cabinet connectors
- Concealed hinges
- Soft closing systems
- Drawers and drawer systems
- Kitchen accessories
- Furniture locks
- Decorative

Components

- Dampers
- Precision components

Technologies

- Automation systems
- Precision castings
- Die cast technologies
- Tooling
- Ultrasound fastening technology
- FastFit technology

'Totally Integrated Engineering'

Product Design

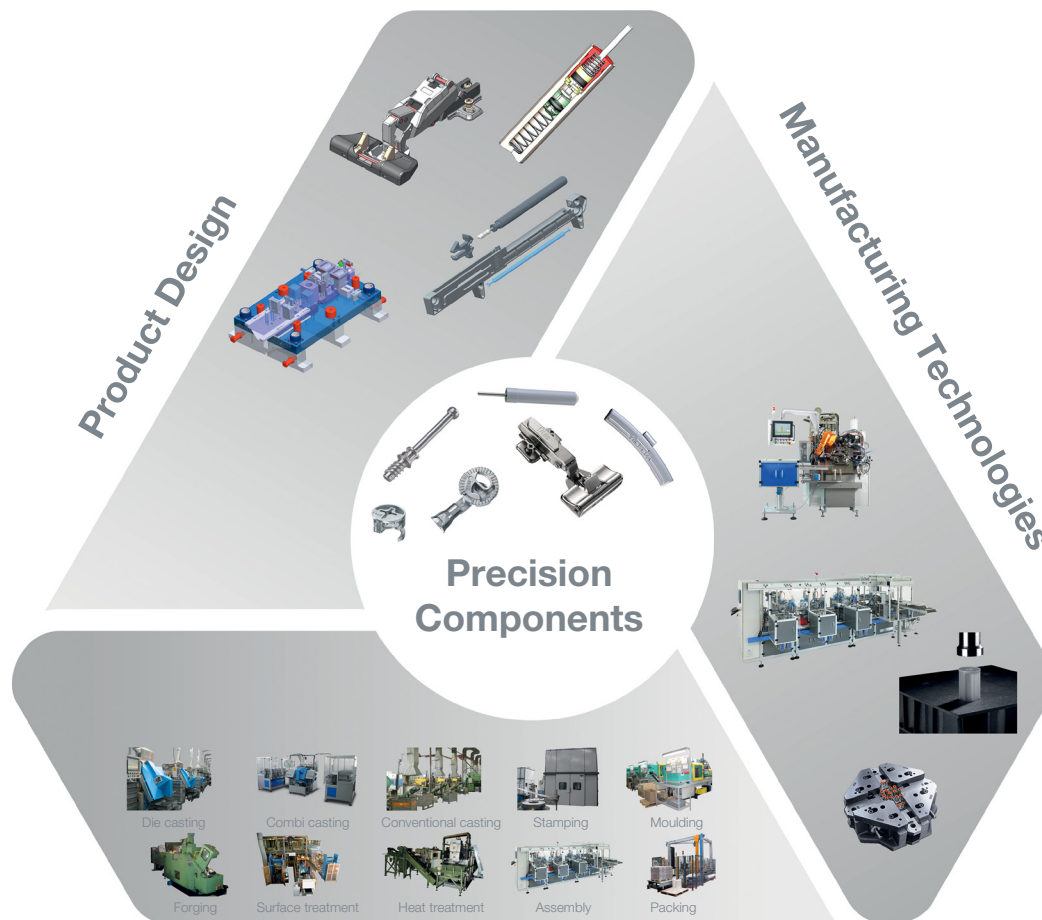
Design and engineering of unique components
Consistent and repeatable product quality

Manufacturing Technologies

to improve productivity and product quality

Manufacturing Operations

A wide array of technologies and services required for high volume production of precision components available in-house



Manufacturing Operations

Fittings for purpose

Unique product advantages for better value for money and lower 'total installed cost'

Innovations that improve

with less parts, less different parts, less preparation actions, faster assembly

Fast time-to-market

Continuous Improvement

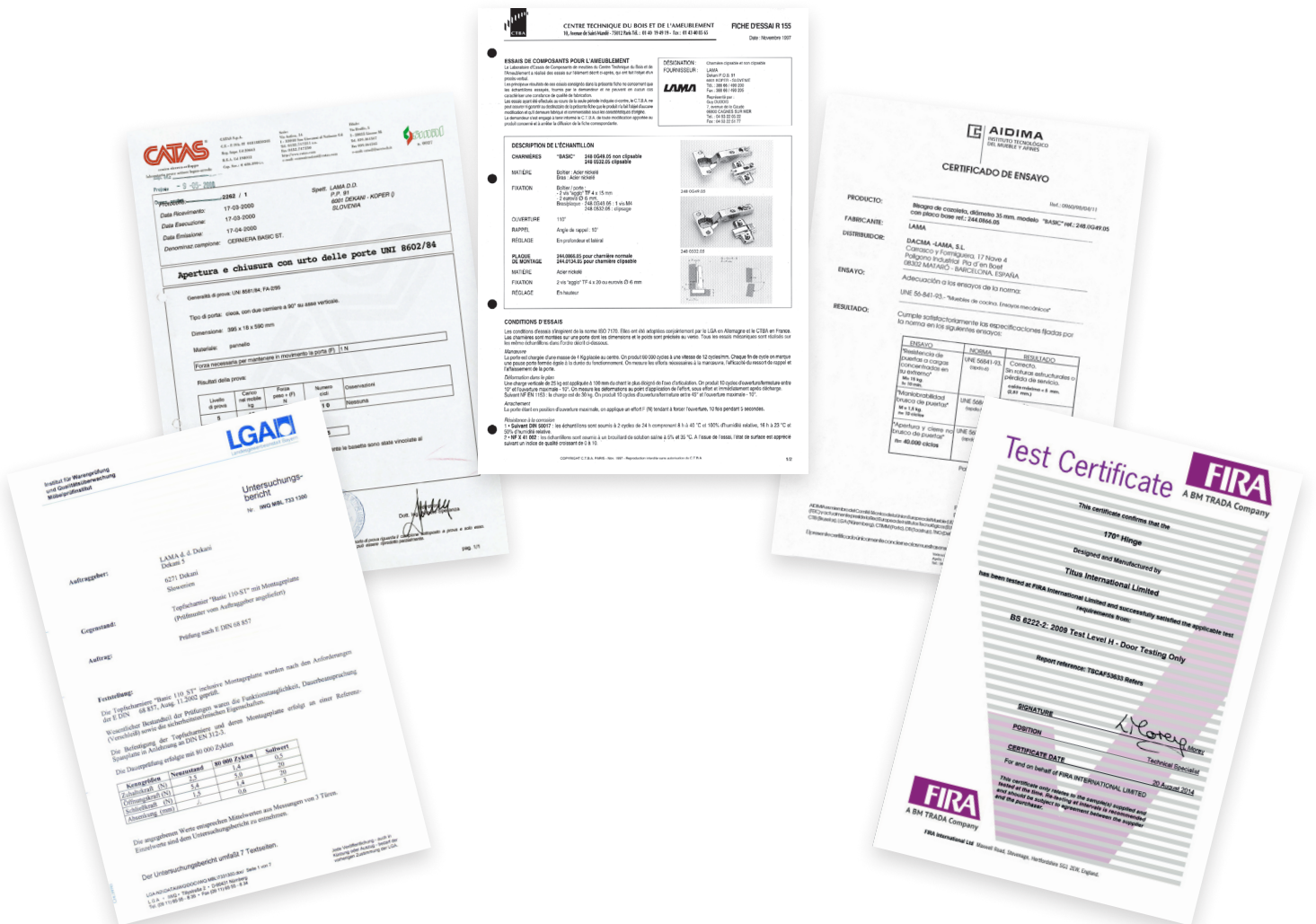
The Titus Group Mission, to improve the competitiveness of our customers, encourages us to continuously improve our products, services, processes and competencies of our employees.

Quality

We believe that the Titus Mission is achieved most effectively through the management of our design, manufacturing and service activities in conformance with the ISO 9001 standard for quality management. Quality has a broad meaning for us: it is our guide to the selection of materials, work, processes, internal relations and cooperation with partners.

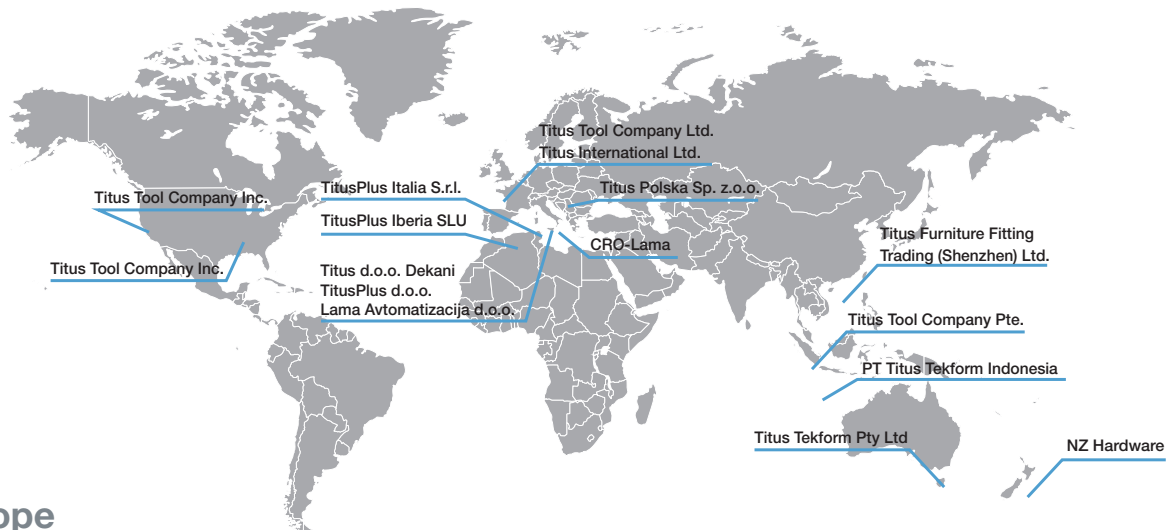
Products

Our integrated quality system produces technically optimized products of high quality. They are assessed regularly in our own test labs as well as by internationally renowned institutions, such as LGA from Germany, CTBA from France, FIRA from United Kingdom, CATAS from Italy, AIDIMA from Spain, and others.



Global player

Worldwide design, manufacturing and distribution capabilities



Europe

TitusPlus d.o.o.
 Dekani 5
 SI-6271 Dekani
 Slovenia
 +386 566 90 213
 +386 566 90 205 Fax
 info@titusplus.com

Titus d.o.o. Dekani
 Dekani 5
 SI-6271 Dekani
 Slovenia
 +386 566 90 213
 +386 566 90 205 Fax
 info@titusplus.com

**Titus Technologies
 Lama Avtomatizacija d.o.o.**
 Dekani 5
 SI-6271 Dekani
 Slovenia
 +386 566 90 432
 +386 566 90 431 Fax
 titustechnologies@titusplus.com

Titus Tool Company Ltd.
 10 Blackburn Industrial Estate
 Enterprise Way
 Sherburn in Elmet
 LS256NA
 United Kingdom
 +44 1977682 582
 +44 1977680 481 Fax
 uk@titusplus.com

CRO-Lama
 Rakitska 10a
 Rakitje
 HR-10437 Bestovje
 Croatia
 +385 1 3323 033
 +385 1 3323 233 Fax
 croatia@titusplus.com

Titus Polska Sp. z .o.
 ul. Stefańskiego 17 A
 PL-62-002 Suchy Las/Poznań
 Poland
 +4861 811 5402 Phone/Fax
 +4861 811 5684 Phone/Fax
 +4861 821 9362
 poland@titusplus.com

TitusPlus Italia Srl
 Via Aquileia 9
 Frazione Olmi
 31048 San Biagio di Callalta (TV)
 +39 04 221 650 120
 +39 04 221 650 136 Fax
 italia@titusplus.com

TitusPlus Iberia SLU
 C/ Gran Bretanya 34
 08520 Les Franqueses del Valles
 (Barcelona)
 +34 938 715 404
 +34 938 605 498 Fax
 iberia@titusplus.com
 www.titusplusiberia.com

America

Titus Tool Co. Inc.
 2800 156th Avenue SE
 Suite 135
 Bellevue, WA 98007, USA
 800 762 1616 toll free
 +1 425 746 2080
 +1 425 746 2344 Fax

Titus Tool Co. Inc.
 220 Messner Drive
 US-60090 Wheeling, USA
 800 762 1616 toll free
 +1 253 872 2829
 +1 253 872 2827 Fax
 usa@titusplus.com

Avstralia

Titus Tekform Pty Ltd
 Unit 1, 41-43 Whyalla Place
 Prestons NSW 2170
 Australia
 +61 2 9286 0007
 +61 2 9826 0074 Fax
 www.titustekform.com.au
 info@titustekform.com.au

NZ Hardware Enterprises Ltd
 34 Waipareira Avenue
 Henderson
 Auckland, New Zealand
 +64 9 837 0886
 +64 9 837 8003Fax

Asia

Titus Tool Co. Pte. Ltd.
 5004 Ang Mo Kio Ave 5
 Techplace II #04-01
 Singapore 569872
 +656383 3922
 +656383 3178 Fax
 singapore@titusplus.com

Titus SZ Components limited
 1st Floor, Building No.2,
 Hengchangrong Hi-tech Industrial Park
 128 Shangnan East Road
 Hongtian, Shajing, Baoan District
 Shenzhen, Guangdong Province
 PRC 518125
 +86 755 8348 0916
 +86 8359 2676 Fax
 china@titusplus.com

Titus Tekform Indonesia, PT
 Taman Tekno Blok L2 / 7
 BSD Sektor XI - Tangerang 15314
 Indonesia
 T. +62 21 75873578
 F. +62 21 75873574

Headquarters

Titus International Ltd
 325 Euston Road
 London
 NW1 3AD, United Kingdom
 info@titusplus.com

www.titusplus.com
 info@titusplus.com

Index

Item number	Page
650-8027	14
650-8030	14
650-8035	14
650-8040	14
650-8045	14
650-8050	14
650-8055	14
650-8127	16
650-8130	16
650-8135	16
650-8140	16
650-8145	16
650-8150	16
650-8155	16
650-8227	18
650-8230	18
650-8235	18
650-8240	18
650-8245	18
650-8250	18
650-8255	18
650-8327	14
650-8330	14
650-8335	14
650-8340	14
650-8345	14
650-8350	14
650-8355	14
650-8401	32
650-8402	32
650-8403	32
650-8404	32
650-8405	32
650-8406	32
650-8407	32
650-8427	32
650-8430	32
650-8435	32
650-8440	32
650-8445	32
650-8450	32
650-8455	32
650-8460	33
650-8461	33
650-8462	33
650-8463	33
650-8464	33
650-8465	33
650-8466	33
650-8467	33
650-8468	33
650-8469	33

Item number	Page
650-8470	33
650-8471	33
650-8472	33
650-8473	33
650-8484	32
650-8485	32
650-8488	33
650-8489	33
650-8498	22
650-8499	22
650-8501	22
650-8502	22
650-8503	24
650-8504	24
650-8505	26
650-8506	26
650-8509	28
650-8510	28
650-8511	30
650-8512	30
650-8515	24
650-8516	24
650-8517	26
650-8518	26
650-8521	28
650-8522	28
650-8523	30
650-8524	30
650-8565	22, 24, 26, 28, 30
650-8566	22, 24, 26, 28, 30
650-8567	22, 24, 26, 28, 30
650-8568	22, 24, 26, 28, 30
650-8569	22, 24, 26, 28, 30
650-8590	24
650-8591	24
650-8592	24
650-8593	24
650-8594	24
650-8600	26,30
650-8601	26,30
650-8602	26,30
650-8603	26,30
650-8604	26,30
650-8610	28
650-8611	28
650-8612	28

Item number	Page
650-8613	28
650-8614	28
650-8703	34
650-8704	34
650-8706	34
650-8708	34
650-8709	34
650-8710	34
650-8712	34
650-8727	21
650-8730	21
650-8735	21
650-8740	21
650-8745	21
650-8750	21
650-8755	21
650-8770	34
650-8771	34
650-8772	34
650-8773	34
650-8774	34
650-8775	34
650-8776	34
650-8777	34
650-8827	16
650-8830	16
650-8835	16
650-8840	16
650-8845	16
650-8850	16
650-8855	16
650-8880	35
650-8881	35
650-8882	35
650-8883	35
650-8884	35
650-8885	35
650-8886	35
650-8887	35
650-8888	35
650-8889	35
650-8901	21
650-8902	21
650-8903	21
650-8904	21
650-8905	21
650-8906	21
650-8907	21
650-8912	22
650-8913	24
650-8914	26
650-8915	28

Item number	Page
650-8916	30
650-8927	18
650-8930	18
650-8935	18
650-8940	18
650-8945	18
650-8950	18
650-8955	18
650-8C27	20
650-8C30	20
650-8C35	20
650-8C40	20
650-8C45	20
650-8C50	20
650-8C55	20
650-8D27	20
650-8D30	20
650-8D35	20
650-8D40	20
650-8D45	20
650-8D50	20
650-8D55	20
660-8A27	20
660-8A30	20
660-8A35	20
660-8A40	20
660-8A45	20
660-8A50	20
660-8A55	20
660-8B27	20
660-8B30	20
660-8B35	20
660-8B40	20
660-8B45	20
660-8B50	20
660-8B55	20

Your authorized dealer